

# Recombinant Human KTN1 Protein (Glu1104-Glu1357), N-His tagged

Cat. No. KTN1-4398H    Lot. No. (See product label)

## SPECIFICATION

|                         |   |
|-------------------------|---|
| <b>Product Overview</b> | Recombinant human KTN1 (Glu1104-Glu1357) fused with the N-His tag was expressed in E. coli.   |
| <b>Species</b>          | Human   |
| <b>Source</b>           | E.coli  |
| <b>ProteinLength</b>    | Glu1104-Glu1357   |
| <b>Form</b>             | Lyophilized powder/frozen liquid  |
| <b>Molecular Mass</b>   | 31.77 kDa   |
| <b>Purity</b>           | >90% as determined by SDS-PAGE.   |
| <b>Notes</b>            | For research use only.  |
| <b>Storage</b>          | Use a manual defrost freezer and avoid repeated freeze thaw cycles. Store at 2 to 8 centigrade for one week. Store at -20 to -80 centigrade for twelve months from the date of receipt. |
| <b>Storage Buffer</b>   | 0.01M PBS, pH 7.4, 0.02% NLS  |
| <b>Reconstitution</b>   | Reconstitute in sterile water for a stock solution.   |

 Tel: 1-631-559-9269    1-516-512-3133

 Email: [info@creative-biomart.com](mailto:info@creative-biomart.com)     Fax: 1-631-938-8127

 45-1 Ramsey Road, Shirley, NY 11967, USA

**Shipping** They are shipped out with dry ice/blue ice unless customers require otherwise.

## GENE INFORMATION

**Gene Name** KTN1 kinectin 1 (kinesin receptor) [ Homo sapiens (human) ]

**Official Symbol** KTN1

**Synonyms** KTN1; kinectin 1 (kinesin receptor); kinectin; CG1; KIAA0004; CG-1 antigen; kinesin receptor; KNT; MU-RMS-40.19; MGC133337;

**Gene ID** 3895

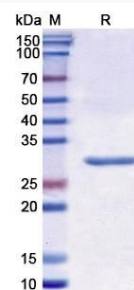
**mRNA Refseq** NM\_001079521

**Protein Refseq** NP\_001072989

**MIM** 600381

**UniProt ID** Q86UP2

### SDS-PAGE



 Tel: 1-631-559-9269 1-516-512-3133

 Email: [info@creative-biomart.com](mailto:info@creative-biomart.com)  Fax: 1-631-938-8127

 45-1 Ramsey Road, Shirley, NY 11967, USA