

Recombinant Human KXD1 Protein, GST-tagged

Cat. No. KXD1-4332H **Lot. No.** (See product label)

SPECIFICATION

Product Overview	Human MGC2749 full-length ORF (NP_076974.1, 1 a.a. - 176 a.a.) recombinant protein with GST-tag at N-terminal.
Species	Human
Source	Wheat Germ
Description	KXD1 (KxDL Motif Containing 1) is a Protein Coding gene.
Molecular Mass	46 kDa
AA Sequence	MDLPDSASRVFCGRILSMVNTDDVNAILAQKNMLDRFEKTNEMLLNFNNLSSARLQ QMSERFLHHTRTLVEKRDLSIFRRIRTLKGLARQHPPEAFSHIPEASFLEEDED IPPSTTTTIATSEQSTGSCDTSPDTVSPSLSPGFEDLSHVQAGSPAINGRSQTDDEE MTGE
Applications	Enzyme-linked Immunoabsorbent Assay Western Blot (Recombinant protein) Antibody Production Protein Array
Notes	Best use within three months from the date of receipt of this protein.
Storage	Store at -80 centigrade. Aliquot to avoid repeated freezing and thawing.

 Tel: 1-631-559-9269 1-516-512-3133

 Email: info@creative-biomart.com  Fax: 1-631-938-8127

 45-1 Ramsey Road, Shirley, NY 11967, USA

Storage Buffer 50 mM Tris-HCl, 10 mM reduced Glutathione, pH=8.0 in the elution buffer.

GENE INFORMATION

Gene Name KXD1 KxDL motif containing 1 [Homo sapiens (human)]

Official Symbol KXD1

Synonyms KXD1; KxDL motif containing 1; KXDL; BORCS4; MST096; MSTP096; C10orf50; C19orf50; kxdl motif-containing protein 1; UPF0459 protein C19orf50

Gene ID 79036

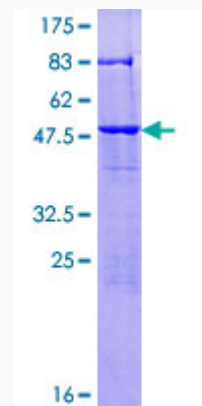
mRNA Refseq NM_001171948

Protein Refseq NP_001165419

MIM 615178

UniProt ID Q9BQD3

Quality Control Testing



 Tel: 1-631-559-9269 1-516-512-3133

 Email: info@creative-biomart.com  Fax: 1-631-938-8127

 45-1 Ramsey Road, Shirley, NY 11967, USA



12.5% SDS-PAGE Stained with Coomassie Blue

 Tel: 1-631-559-9269 1-516-512-3133

 Email: info@creative-biomart.com  Fax: 1-631-938-8127

 45-1 Ramsey Road, Shirley, NY 11967, USA