

## Recombinant Human KYNU Protein, His-tagged

Cat. No. KYNU-1082H Lot. No. (See product label)

### SPECIFICATION

<b>Product Overview</b>	Recombinant Human KYNU Protein (Met1-Asn465) with His tag was expressed in 293F.
<b>Species</b>	Human
<b>Source</b>	HEK293
<b>ProteinLength</b>	Met1-Asn465
<b>Description</b>	Kynureninase is a pyridoxal-5'-phosphate (pyridoxal-P) dependent enzyme that catalyzes the cleavage of L-kynurenine and L-3-hydroxykynurenine into anthranilic and 3-hydroxyanthranilic acids, respectively. Kynureninase is involved in the biosynthesis of NAD cofactors from tryptophan through the kynurenine pathway. Alternative splicing results in multiple transcript variants.
<b>Form</b>	Freeze-dried powder
<b>Molecular Mass</b>	Predicted Molecular Mass: 55.5 kDa; Accurate Molecular Mass: 56 kDa
<b>Purity</b>	> 95%
<b>Applications</b>	Positive Control; Immunogen; SDS-PAGE; WB.
<b>Stability</b>	The thermal stability is described by the loss rate. The loss rate was determined by accelerated thermal degradation test, that is, incubate the protein at 37 centigrade for

 Tel: 1-631-559-9269 1-516-512-3133

 Email: [info@creative-biomart.com](mailto:info@creative-biomart.com)  Fax: 1-631-938-8127

 45-1 Ramsey Road, Shirley, NY 11967, USA

48h, and no obvious degradation and precipitation were observed. The loss rate is less than 5% within the expiration date under appropriate storage condition.

**Storage**

Avoid repeated freeze/thaw cycles. Store at 2-8 centigrade for one month. Aliquot and store at -80 centigrade for 12 months.

**Storage Buffer**

20mM Tris, 150mM NaCl, pH8.0, containing 1mM EDTA, 1mM DTT, 0.01% SKL, 5% Trehalose and Proclin300.

**Reconstitution**

Reconstitute in 20mM Tris, 150mM NaCl (pH8.0) to a concentration of 0.1-1.0 mg/mL. Do not vortex.

## GENE INFORMATION

**Gene Name**

KYNU kynureninase [ Homo sapiens (human) ]

**Official Symbol**

KYNU

**Synonyms**

KYNU; kynureninase; kynureninase (L kynurenine hydrolase); L kynurenine hydrolase; kynureninase (L-kynurenine hydrolase);

**Gene ID**

8942

**mRNA Refseq**

NM\_001032998

**Protein Refseq**

NP\_001028170

**MIM**

605197

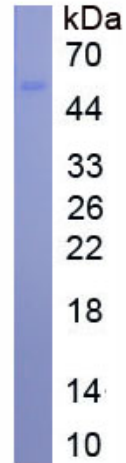
**UniProt ID**

Q16719

 Tel: 1-631-559-9269 1-516-512-3133

 Email: [info@creative-biomart.com](mailto:info@creative-biomart.com)  Fax: 1-631-938-8127

 45-1 Ramsey Road, Shirley, NY 11967, USA



Tel: 1-631-559-9269 1-516-512-3133

Email: [info@creative-biomart.com](mailto:info@creative-biomart.com) Fax: 1-631-938-8127

45-1 Ramsey Road, Shirley, NY 11967, USA