

## Recombinant Human KYNU Protein, His-tagged

**Cat. No.** KYNU-2382H    **Lot. No.** (See product label)

### SPECIFICATION

|                         |  |
|-------------------------|--|
| <b>Product Overview</b> | Recombinant Human KYNU Protein (Tyr156-Asn465) with a N-His tag was expressed in E. coli.  |
| <b>Species</b>          | Human  |
| <b>Source</b>           | E.coli   |
| <b>ProteinLength</b>    | Tyr156-Asn465  |
| <b>Description</b>      | Kynureninase is a pyridoxal-5'-phosphate (pyridoxal-P) dependent enzyme that catalyzes the cleavage of L-kynurenine and L-3-hydroxykynurenine into anthranilic and 3-hydroxyanthranilic acids, respectively. Kynureninase is involved in the biosynthesis of NAD cofactors from tryptophan through the kynurenine pathway. Alternative splicing results in multiple transcript variants. |
| <b>Form</b>             | Freeze-dried powder  |
| <b>Molecular Mass</b>   | Predicted Molecular Mass: 38.4 kDa<br>Accurate Molecular Mass: 38 kDa  |
| <b>Endotoxin</b>        | <1.0 EU per 1g (determined by the LAL method).   |
| <b>Purity</b>           | > 90%  |
| <b>Applications</b>     | Positive Control; Immunogen; SDS-PAGE; WB.   |

 Tel: 1-631-559-9269    1-516-512-3133

 Email: [info@creative-biomart.com](mailto:info@creative-biomart.com)     Fax: 1-631-938-8127

 45-1 Ramsey Road, Shirley, NY 11967, USA

|                       |  |
|-----------------------|--|
| <b>Stability</b>      | The thermal stability is described by the loss rate. The loss rate was determined by accelerated thermal degradation test, that is, incubate the protein at 37 centigrade for 48h, and no obvious degradation and precipitation were observed. The loss rate is less than 5% within the expiration date under appropriate storage condition. |
| <b>Storage</b>        | Avoid repeated freeze/thaw cycles. Store at 2-8 centigrade for one month. Aliquot and store at -80 centigrade for 12 months.   |
| <b>Storage Buffer</b> | 20mM Tris, 150mM NaCl, pH8.0, containing 1mM EDTA, 1mM DTT, 0.01% SKL, 5% Trehalose and Proclin300.  |
| <b>Reconstitution</b> | Reconstitute in 20mM Tris, 150mM NaCl (pH8.0) to a concentration of 0.1-1.0 mg/mL. Do not vortex.  |

## GENE INFORMATION

|                        |   |
|------------------------|---|
| <b>Gene Name</b>       | KYNU kynureninase [ Homo sapiens (human) ]  |
| <b>Official Symbol</b> | KYNU  |
| <b>Synonyms</b>        | KYNU; kynureninase; kynureninase (L kynurenine hydrolase); L kynurenine hydrolase; kynureninase (L-kynurenine hydrolase); |
| <b>Gene ID</b>         | 8942  |
| <b>mRNA Refseq</b>     | NM_001032998  |
| <b>Protein Refseq</b>  | NP_001028170  |
| <b>MIM</b>             | 605197  |

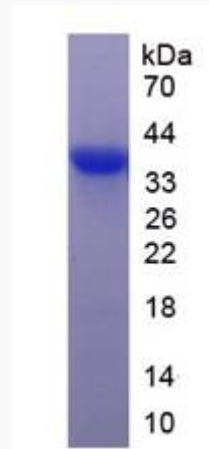
 Tel: 1-631-559-9269 1-516-512-3133

 Email: [info@creative-biomart.com](mailto:info@creative-biomart.com)  Fax: 1-631-938-8127

 45-1 Ramsey Road, Shirley, NY 11967, USA

UniProt ID

Q16719



 Tel: 1-631-559-9269 1-516-512-3133

 Email: [info@creative-biomart.com](mailto:info@creative-biomart.com)  Fax: 1-631-938-8127

 45-1 Ramsey Road, Shirley, NY 11967, USA