

Active Recombinant Human KYNU Protein, His-tagged

Cat. No. KYNU-253H Lot. No. (See product label)

SPECIFICATION

Product Overview	Active Recombinant Human KYNU Protein(Q16719) (Met 1- Asn 465) was expressed in Insect Cells with a polyhistidine tag at the C-terminus.
Species	Human
Source	Insect Cells
ProteinLength	1-465 aa
Form	Lyophilized from sterile 20mM Tris, 500mM NaCl, pH 8.0, 25% gly.
Bio-activity	Measured by its ability to oxidize 3-hydroxykynurenine. The specific activity is > 200 pmoles/min/μg.
Molecular Mass	The recombinant human KYNU consists of 475 amino acids and predicts a molecular mass of 53.7 kDa. The apparent molecular mass of rhKYNU is approximately 47 kDa in SDS-PAGE under reducing conditions.
Endotoxin	< 1.0 EU per μg of the protein as determined by the LAL method.
Purity	> 92 % as determined by SDS-PAGE
Storage	Store it under sterile conditions at -20°C to -80°C upon receiving. Recommend to aliquot the protein into smaller quantities for optimal storage. Avoid repeated freeze-thaw cycles.

 Tel: 1-631-559-9269 1-516-512-3133

 Email: info@creative-biomart.com  Fax: 1-631-938-8127

 45-1 Ramsey Road, Shirley, NY 11967, USA

Reconstitution It is recommended that sterile water be added to the vial to prepare a stock solution of 0.2 ug/ul. Centrifuge the vial at 4°C before opening to recover the entire contents.

GENE INFORMATION

Gene Name KYNU kynureninase [Homo sapiens]

Official Symbol KYNU

Synonyms KYNU; kynureninase; kynureninase (L kynurenine hydrolase); L kynurenine hydrolase; kynureninase (L-kynurenine hydrolase);

Gene ID 8942

mRNA Refseq NM_001032998

Protein Refseq NP_001028170

MIM 605197

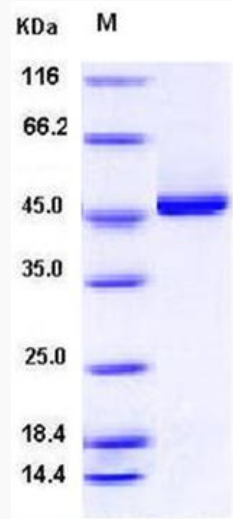
UniProt ID Q16719

 Tel: 1-631-559-9269 1-516-512-3133

 Email: info@creative-biomart.com  Fax: 1-631-938-8127

 45-1 Ramsey Road, Shirley, NY 11967, USA

SDS-PAGE



 Tel: 1-631-559-9269 1-516-512-3133

 Email: info@creative-biomart.com  Fax: 1-631-938-8127

 45-1 Ramsey Road, Shirley, NY 11967, USA