

Recombinant Rat Kcnj16 Full Length Transmembrane protein, His-tagged

Cat. No. Kcnj16-322R **Lot. No.** (See product label)

SPECIFICATION

Product Overview

Recombinant Rat Kcnj16 protein(P52191)(1-419aa), fused with N-terminal His tag, was expressed in in vitro E. coli expression system.

Species

Rat

Source

E.coli

ProteinLength

1-419aa

Form

If the delivery form is liquid, the default storage buffer is Tris/PBS-based buffer, 5%-50% glycerol.

If the delivery form is lyophilized powder, the buffer before lyophilization is Tris/PBS-based buffer, 6% Trehalose, pH 8.0.

Molecular Mass

54.0 kDa

AA Sequence

MSYYGSSYRIVNVDSKYPGYPPEHAIAIEKRRARRRLLHKDGCNVYFKHIFGEWGS
 YMVDIFTTLVDTKWRHMFVVFSLSYILSWLIFGSIFWLIALLHHGDLLSDPDITPCVDNV
 HSFTA AFLSLETQTTIGYGYRCVTEECVAVLTVILQSILSCIINTFIIGAALAKMATAR
 KRAQTIRFSYFALIGMRDGLCLMWRIGDFRPNHVVEGTVRAQLLRYSSEGRMT
 MAFKDLKLVNDQIILVTPVTIVHEIDHESPLYALDRKAVAKDNFEILVTFIYTG DSTGTS
 HQSRSSYVPREILWGHFRHFDVLEVKRKYKVNCLQFEGSVEVYAPFCSAKQLDWK
 DQQLNNLEKTSPARGSCTSDTNTRRRSFSVAMVSSCENPEETSLSPQDECKEVP
 YQKALLTLNRISMESQM

 Tel: 1-631-559-9269 1-516-512-3133

 Email: info@creative-biomart.com  Fax: 1-631-938-8127

 45-1 Ramsey Road, Shirley, NY 11967, USA

Purity	Greater than 85% as determined by SDS-PAGE.
Storage	Store at -20°C/-80°C upon receipt, aliquoting is necessary for mutiple use. Avoid repeated freeze-thaw cycles.
Reconstitution	Please reconstitute protein in deionized sterile water to a concentration of 0.1-1.0 mg/mL. We recommend to add 5-50% of glycerol (final concentration) and aliquot for long-term storage at -20°C/-80°C.

GENE INFORMATION

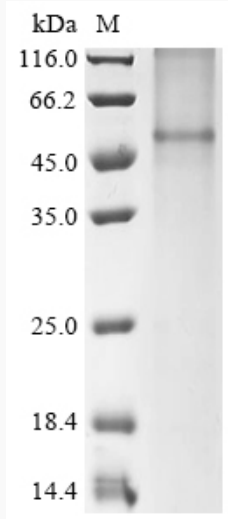
Gene Name	Kcnj16 potassium inwardly-rectifying channel, subfamily J, member 16 [Rattus norvegicus]
Official Symbol	Kcnj16
Synonyms	KCNJ16; potassium inwardly-rectifying channel, subfamily J, member 16; inward rectifier potassium channel 16; BIR9; inward rectifier K(+) channel Kir5.1; potassium channel, inwardly rectifying subfamily J member 16; Kir5.1;
Gene ID	29719
mRNA Refseq	NM_053314
Protein Refseq	NP_445766

 Tel: 1-631-559-9269 1-516-512-3133

 Email: info@creative-biomart.com  Fax: 1-631-938-8127

 45-1 Ramsey Road, Shirley, NY 11967, USA

SDS-PAGE



 Tel: 1-631-559-9269 1-516-512-3133

 Email: info@creative-biomart.com  Fax: 1-631-938-8127

 45-1 Ramsey Road, Shirley, NY 11967, USA