

# Recombinant Rat Kcnn2 Full Length Transmembrane protein, His-tagged

**Cat. No.** Kcnn2-048R    **Lot. No.** (See product label)

## SPECIFICATION

<b>Product Overview</b>	Recombinant Rat Kcnn2 protein(P70604)(1-580aa), fused with N-terminal His tag, was expressed in in vitro E. coli expression system.
<b>Species</b>	Rat
<b>Source</b>	E.coli
<b>ProteinLength</b>	1-580aa
<b>Form</b>	If the delivery form is liquid, the default storage buffer is Tris/PBS-based buffer, 5%-50% glycerol. If the delivery form is lyophilized powder, the buffer before lyophilization is Tris/PBS-based buffer, 6% Trehalose, pH 8.0.
<b>Molecular Mass</b>	69.9 kDa
<b>AA Sequence</b>	MSSCRYNGGVMRPLSNLSSSRRLHEMDSEAQPLQPPASVVGGGGGASSPSAAA AASSAPEIVVSKPEHNNSNNLALYGTGGGGSTGGGGGGGGGGGGSGHGSSSGT KSSKKKNQNIKYKLGHRRALFEKRKRLSDYALIFGMFGIVVMVIETELSWGAYDKASL YSLALKCLISLSTIILLGLIIVYHAREIQLFMVDNGADDWRIAMTYERIFFICLEILVCAIHP IPGNYTFTWTARLAFSYAPSTTTADVDIILSIPMFLRLYLIARVMLLHSKLFTDASSRSI GALNKINFNTRFVMKTLMTICPGTVLLVFSISLWIAAWTVRACERYHDQQDVTSNFL GAMWLISITFLSIGYGDMVPNTYCGKGVCLLTGIMGAGCTALVVAVVARKLELTKAEK HVHNFMMDTQLTKRVKNAAANVLRETWLIYKNTKLVKKIDHAKVRKHQRKFLQAIHQ

 Tel: 1-631-559-9269    1-516-512-3133

 Email: [info@creative-biomart.com](mailto:info@creative-biomart.com)     Fax: 1-631-938-8127

 45-1 Ramsey Road, Shirley, NY 11967, USA

LRSVKMEQRKLNQANTLVDLAKTQNMIDMISDLNERSEDFEKRIVTLETKLETIG  
 SIHALPGLISQTIRQQQRDFIETQMENYDKHVITYNAERSRSSSRRRSSSTAPPTSS  
 ESS-

**Purity** Greater than 85% as determined by SDS-PAGE.

**Storage** Store at -20°C/-80°C upon receipt, aliquoting is necessary for multiple use. Avoid repeated freeze-thaw cycles.

**Reconstitution** Please reconstitute protein in deionized sterile water to a concentration of 0.1-1.0 mg/mL. We recommend to add 5-50% of glycerol (final concentration) and aliquot for long-term storage at -20°C/-80°C.

## GENE INFORMATION

**Gene Name** [Kcnn2 potassium intermediate/small conductance calcium-activated channel, subfamily N, member 2 \[ Rattus norvegicus \]](#)

**Official Symbol** [Kcnn2](#)

**Synonyms** KCNN2; potassium intermediate/small conductance calcium-activated channel, subfamily N, member 2; small conductance calcium-activated potassium channel protein 2; SK2; SKCa2; SKCa 2; small conductance calcium-activated channel, subfamily N, member 2; KCa2.2;

**Gene ID** [54262](#)

**mRNA Refseq** [NM\\_019314](#)

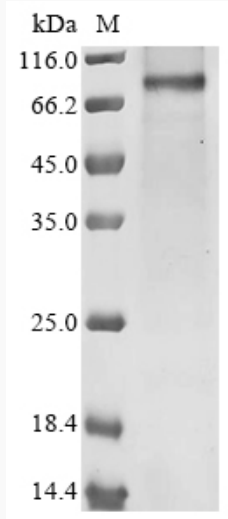
**Protein Refseq** [NP\\_062187](#)

 Tel: 1-631-559-9269 1-516-512-3133

 Email: [info@creative-biomart.com](mailto:info@creative-biomart.com)  Fax: 1-631-938-8127

 45-1 Ramsey Road, Shirley, NY 11967, USA

**SDS-PAGE**



 Tel: 1-631-559-9269 1-516-512-3133

 Email: [info@creative-biomart.com](mailto:info@creative-biomart.com)  Fax: 1-631-938-8127

 45-1 Ramsey Road, Shirley, NY 11967, USA