

Recombinant Mouse Kcp Protein, His-tagged

Cat. No. Kcp-1710M Lot. No. (See product label)

SPECIFICATION

Product Overview	Recombinant Mouse Kcp Protein (Val27-Arg242) with N-His tag was expressed in E. coli.
Species	Mouse
Source	E.coli
ProteinLength	Val27-Arg242
Description	Acts upstream of or within hematopoietic progenitor cell differentiation and positive regulation of BMP signaling pathway. Located in extracellular space. Orthologous to human KCP (kielin cysteine rich BMP regulator).
Form	Freeze-dried powder
Molecular Mass	Predicted Molecular Mass: 27.3 kDa Accurate Molecular Mass: 24 kDa
Purity	> 90%
Applications	Positive Control; Immunogen; SDS-PAGE; WB.
Stability	The thermal stability is described by the loss rate. The loss rate was determined by accelerated thermal degradation test, that is, incubate the protein at 37 centigrade for 48h, and no obvious degradation and precipitation were observed. The loss rate is

 Tel: 1-631-559-9269 1-516-512-3133

 Email: info@creative-biomart.com  Fax: 1-631-938-8127

 45-1 Ramsey Road, Shirley, NY 11967, USA

less than 5% within the expiration date under appropriate storage condition.

Storage

Avoid repeated freeze/thaw cycles. Store at 2-8 centigrade for one month. Aliquot and store at -80 centigrade for 12 months.

Storage Buffer

20mM Tris, 150mM NaCl, pH8.0, containing 1mM EDTA, 1mM DTT, 0.01% SKL, 5% Trehalose and Proclin300.

Reconstitution

Reconstitute in 10mM PBS (pH7.4) to a concentration of 0.1-1.0 mg/mL. Do not vortex.

GENE INFORMATION

Gene Name

[Kcp kielin/chordin-like protein \[Mus musculus \(house mouse\) \]](#)

Official Symbol

[Kcp](#)

Synonyms

Kcp; kielin/chordin-like protein; Crim2; Gm793; KCP-1; CRIM-2; AW060220; kielin/chordin-like protein; cysteine rich BMP regulator 2 (chordin like); cysteine-rich BMP regulator 2; cysteine-rich motor neuron 2 protein; kielin/chordin-like protein 1

Gene ID

[333088](#)

mRNA Refseq

[NM_001029985](#)

Protein Refseq

[NP_001025156](#)

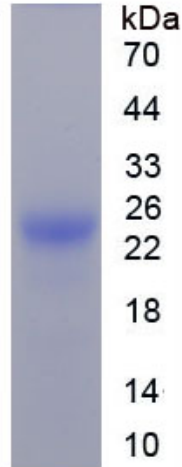
UniProt ID

[Q3U492](#)

 Tel: 1-631-559-9269 1-516-512-3133

 Email: info@creative-biomart.com  Fax: 1-631-938-8127

 45-1 Ramsey Road, Shirley, NY 11967, USA



Tel: 1-631-559-9269 1-516-512-3133

Email: info@creative-biomart.com Fax: 1-631-938-8127

45-1 Ramsey Road, Shirley, NY 11967, USA