

# Recombinant Mouse Kdelr2 Full Length Transmembrane protein, His-tagged

**Cat. No.** Kdelr2-024M    **Lot. No.** (See product label)

## SPECIFICATION

<b>Product Overview</b>	Recombinant Mouse Kdelr2 protein(Q9CQM2)(1-212aa), fused with N-terminal His tag, was expressed in in vitro E. coli expression system.
<b>Species</b>	Mouse
<b>Source</b>	E.coli
<b>ProteinLength</b>	1-212aa
<b>Form</b>	If the delivery form is liquid, the default storage buffer is Tris/PBS-based buffer, 5%-50% glycerol. If the delivery form is lyophilized powder, the buffer before lyophilization is Tris/PBS-based buffer, 6% Trehalose, pH 8.0.
<b>Molecular Mass</b>	26.0 kDa
<b>AA Sequence</b>	MNIFRLTGDLSHLAAIVILLKIKWKTRSCAGISGKSQLLFALVFTRYLDLFTSFISLYNT SMKLIYIACSATVYLIYMFKKATYDGNHDTFRVEFLVVPVGGLSFLVNHDFSPLEILW TFSIYLESVAILPQLFMISKTGAEITITHYLFGLGLYRALYLVNWIWRFYFEGFFDLIA VVAGVVQTIYCDFFLYITKVLKGGKLSLPA
<b>Purity</b>	Greater than 85% as determined by SDS-PAGE.
<b>Storage</b>	Store at -20°C/-80°C upon receipt, aliquoting is necessary for mutiple use. Avoid

 Tel: 1-631-559-9269    1-516-512-3133

 Email: [info@creative-biomart.com](mailto:info@creative-biomart.com)     Fax: 1-631-938-8127

 45-1 Ramsey Road, Shirley, NY 11967, USA

repeated freeze-thaw cycles.

**Reconstitution**

Please reconstitute protein in deionized sterile water to a concentration of 0.1-1.0 mg/mL. We recommend to add 5-50% of glycerol (final concentration) and aliquot for long-term storage at -20°C/-80°C.

## GENE INFORMATION

**Gene Name**

[Kdelr2 KDEL \(Lys-Asp-Glu-Leu\) endoplasmic reticulum protein retention receptor 2 \[ Mus musculus \]](#)

**Official Symbol**

[Kdelr2](#)

**Synonyms**

KDEL2; KDEL (Lys-Asp-Glu-Leu) endoplasmic reticulum protein retention receptor 2; ER lumen protein retaining receptor 2; KDEL receptor 2; KDEL endoplasmic reticulum protein retention receptor 2; 1110007A14Rik;

**Gene ID**

[66913](#)

**mRNA Refseq**

[NM\\_025841](#)

**Protein Refseq**

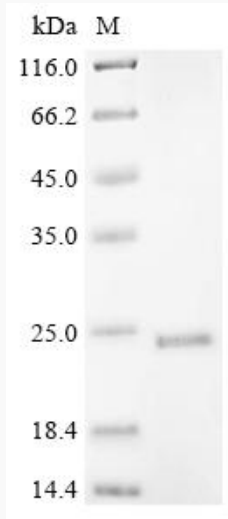
[NP\\_080117](#)

 Tel: 1-631-559-9269 1-516-512-3133

 Email: [info@creative-biomart.com](mailto:info@creative-biomart.com)  Fax: 1-631-938-8127

 45-1 Ramsey Road, Shirley, NY 11967, USA

**SDS-PAGE**



 Tel: 1-631-559-9269 1-516-512-3133

 Email: [info@creative-biomart.com](mailto:info@creative-biomart.com)  Fax: 1-631-938-8127

 45-1 Ramsey Road, Shirley, NY 11967, USA