

Recombinant Mouse Kdr protein, His-tagged

Cat. No. Kdr-6866M Lot. No. (See product label)

SPECIFICATION

Product Overview	Recombinant Mouse Kdr aa. (Asn46~Thr322) fused with N-terminal His tag was produced in E. coli cells.
Species	Mouse
Source	E.coli
ProteinLength	Asn46~Thr322
Form	Freeze-dried powder
Molecular Mass	34kDa as determined by SDS-PAGE reducing conditions.
Endotoxin	<1.0EU per 1ug (determined by the LAL method)
Purity	>92%
Characteristic	The isoelectric point is 7.6.
Applications	Positive Control; Immunogen; SDS-PAGE; WB.
Stability	The thermal stability is described by the loss rate. The loss rate was determined by accelerated thermal degradation test, that is, incubate the protein at 37°C for 48h, and no obvious degradation and precipitation were observed. The loss rate is less than 5% within the expiration date under appropriate storage condition.

 Tel: 1-631-559-9269 1-516-512-3133

 Email: info@creative-biomart.com  Fax: 1-631-938-8127

 45-1 Ramsey Road, Shirley, NY 11967, USA

Storage	Avoid repeated freeze/thaw cycles. Store at 2-8°C for one month. Aliquot and store at -80°C for 12 months.
Concentration	200ug/mL
Storage buffer	10mM PBS, pH7.4, containing 1mM DTT, 5% trehalose, 0.01% sarcosyl and Proclin300.
Reconstitution	Reconstitute in 10mM PBS (pH7.4) to a concentration of 0.1-1.0 mg/mL. Do not vortex.

GENE INFORMATION

Gene Name	Kdr kinase insert domain protein receptor [Mus musculus (house mouse)]
Official Symbol	Kdr
Synonyms	Flk1; Ly73; Flk-1; Krd-1; VEGFR2; VEGFR-2; sVEGFR-2; 6130401C07; VEGF receptor-2; fetal liver kinase 1; kinase NYK; protein; tyrosine kinase receptor flk-1; soluble vascular endothelial growth factor receptor 2; vascular endothelial growth factor receptor-3; vascular endothelial growth factor receptor 2
Gene ID	16542
mRNA Refseq	NM_010612.2
Protein Refseq	NP_034742.2
UniProt ID	Q8VCD0

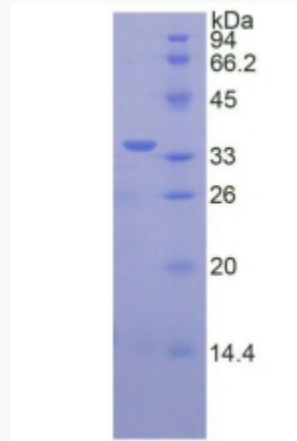
 Tel: 1-631-559-9269 1-516-512-3133

 Email: info@creative-biomart.com  Fax: 1-631-938-8127

 45-1 Ramsey Road, Shirley, NY 11967, USA



SDS-PAGE



Tel: 1-631-559-9269 1-516-512-3133

Email: info@creative-biomart.com Fax: 1-631-938-8127

45-1 Ramsey Road, Shirley, NY 11967, USA