

## Recombinant Rat Keap1 Protein, His-tagged

**Cat. No.** Keap1-1711R    **Lot. No.** (See product label)

### SPECIFICATION

<b>Product Overview</b>	Recombinant Rat Keap1 Protein (Met1-Gln286) with N-His tag was expressed in E. coli.
<b>Species</b>	Rat
<b>Source</b>	E.coli
<b>ProteinLength</b>	Met1-Gln286
<b>Description</b>	Predicted to enable disordered domain specific binding activity and identical protein binding activity. Involved in several processes, including regulation of gene expression; response to thyroid hormone; and selenium compound metabolic process. Located in several cellular components, including adherens junction; focal adhesion; and nucleus. Part of protein-containing complex. Biomarker of diabetic retinopathy; end stage renal disease; and ureteral obstruction. Human ortholog(s) of this gene implicated in gallbladder cancer. Orthologous to human KEAP1 (kelch like ECH associated protein 1).
<b>Form</b>	Freeze-dried powder
<b>Molecular Mass</b>	Predicted Molecular Mass: 36.0 kDa Accurate Molecular Mass: 36 kDa
<b>Purity</b>	> 97%

 Tel: 1-631-559-9269    1-516-512-3133

 Email: [info@creative-biomart.com](mailto:info@creative-biomart.com)     Fax: 1-631-938-8127

 45-1 Ramsey Road, Shirley, NY 11967, USA

<b>Applications</b>	Positive Control; Immunogen; SDS-PAGE; WB.
<b>Stability</b>	The thermal stability is described by the loss rate. The loss rate was determined by accelerated thermal degradation test, that is, incubate the protein at 37 centigrade for 48h, and no obvious degradation and precipitation were observed. The loss rate is less than 5% within the expiration date under appropriate storage condition.
<b>Storage</b>	Avoid repeated freeze/thaw cycles. Store at 2-8 centigrade for one month. Aliquot and store at -80 centigrade for 12 months.
<b>Storage Buffer</b>	20mM Tris, 150mM NaCl, pH8.0, containing 1mM EDTA, 1mM DTT, 0.01% SKL, 5% Trehalose and Proclin300.
<b>Reconstitution</b>	Reconstitute in 20mM Tris, 150mM NaCl (pH8.0) to a concentration of 0.1-1.0 mg/mL. Do not vortex.

## GENE INFORMATION

<b>Gene Name</b>	<a href="#">Keap1 Kelch-like ECH-associated protein 1 [ Rattus norvegicus (Norway rat) ]</a>
<b>Official Symbol</b>	<a href="#">Keap1</a>
<b>Synonyms</b>	KEAP1; Kelch-like ECH-associated protein 1; kelch-like ECH-associated protein 1; cytosolic inhibitor of Nrf2; Inrf2;
<b>Gene ID</b>	<a href="#">117519</a>
<b>mRNA Refseq</b>	<a href="#">NM_057152</a>
<b>Protein Refseq</b>	<a href="#">NP_476493</a>

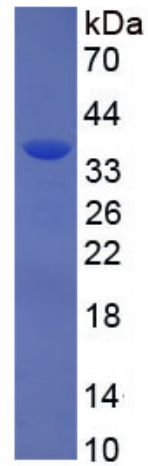
 Tel: 1-631-559-9269 1-516-512-3133

 Email: [info@creative-biomart.com](mailto:info@creative-biomart.com)  Fax: 1-631-938-8127

 45-1 Ramsey Road, Shirley, NY 11967, USA

UniProt ID

G3V8U2



 Tel: 1-631-559-9269 1-516-512-3133

 Email: [info@creative-biomart.com](mailto:info@creative-biomart.com)  Fax: 1-631-938-8127

 45-1 Ramsey Road, Shirley, NY 11967, USA