

Recombinant Mouse Kel Protein, His-tagged

Cat. No. Kel-018M Lot. No. (See product label)

SPECIFICATION

Product Overview	Recombinant mouse Kell, fused to His-tag at C terminus, was expressed in insect cell and purified by using conventional chromatography techniques.
Species	Mouse
Source	Insect cells
Description	Zinc endopeptidase with endothelin-3-converting enzyme activity. Cleaves EDN1, EDN2 and EDN3.
Form	Liquid
Molecular Mass	76.3 kDa
AA Sequence	IFRNCGPCPCETPVCMELLDHYLASGNRSVAPCTDFFSFACEKANGTSDSFQALTE ENKSRLWRLLEAPGSWHLGSGEEKAFQFYNSCMDTDAIEASGSGPLIQIIEELGGW NITGNWTSLDFNQNLRLLLMSQYGHFPFFFRAYLRPHPAPPHTPIIQIDQPEFDILLQQE QEQKVYAQILREYVTYLNRLGTLG SNPQEAQQHASWSIVFTSRLFQFLRPQQQQQ AQDKLFHVVTIDELQEMAPAI DWLSCLQAI FT PMSLNSSQTLVVHDL DYLRNMSQLV EEGLLNHRESIQSYMILGLVDTLSPALDTKFQEARRELIQELRKLKERPPLPAYPRWM KCVEQTGAFFEPTLAALFVREAFGPSIQSAAMELFAEIKDAVIIRLKKLSWISEETQKE ALNKLAQLQVEMGAPKRAVKPDIA TQEYNDIQLGPSFLQSFLS CVRSLRARNVQSFL QPPFYHRWQKSPWEVNAYYSISDHMVVFPAGLLQPPFFHPGYPRAVNFGAAGSIM AHELLHIFYQLLLPGGCPACDTHVLQEALLCLERHYAAFPLPSISSFN GSHTLLENAA DIGGVAIAFAQYSKRIVEHTGELTLPNLDLSPYQLFFRSYAQVMCRGLSSQDPQDPH

 Tel: 1-631-559-9269 1-516-512-3133

 Email: info@creative-biomart.com  Fax: 1-631-938-8127

 45-1 Ramsey Road, Shirley, NY 11967, USA



SPPSLRVHGPLSNTPDFAKHFHCPRGTLNPSARCKLW

Endotoxin < 1 EU/μg of protein (determined by LAL method)

Purity > 90% by SDS-PAGE

Applications SDS-PAGE

Storage Can be stored at +2 to +8 centigrade for 1 week. For long term storage, aliquot and store at -20 to -97 centigrade. Avoid repeated freezing and thawing cycles.

Concentration 0.25 mg/mL (determined by Absorbance at 280nm)

Storage Buffer Phosphate-Buffered Saline (pH 7.4) containing 10% glycerol

GENE INFORMATION

Gene Name Kel Kell blood group [*Mus musculus* (house mouse)]

Official Symbol Kel

Synonyms Kel; Kell blood group; Ece3; CD238; kell blood group glycoprotein homolog; Kel blood group protein; Kell blood group, metallo-endopeptidase; Kell protein

Gene ID 23925

mRNA Refseq NM_032540

Protein Refseq NP_115929

UniProt ID Q9EQF2

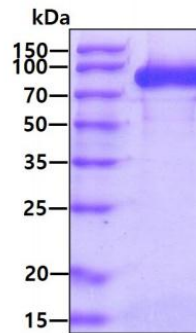
Tel: 1-631-559-9269 1-516-512-3133

Email: info@creative-biomart.com Fax: 1-631-938-8127

45-1 Ramsey Road, Shirley, NY 11967, USA



SDS-PAGE



3 μ g by SDS-PAGE under reducing condition and visualized by coomassie blue stain

Tel: 1-631-559-9269 1-516-512-3133

Email: info@creative-biomart.com Fax: 1-631-938-8127

45-1 Ramsey Road, Shirley, NY 11967, USA