

Recombinant Mouse Khdrbs1 protein, His & T7-tagged

Cat. No. Khdrbs1-1877M Lot. No. (See product label)

SPECIFICATION

Product Overview	Recombinant Mouse Khdrbs1 aa. (Leu156~Glu381 (Accession # Q60749)) fused with N-terminal His & T7 tag was produced in E. coli cells.
Species	Mouse
Source	E.coli
ProteinLength	Leu156~Glu381
Form	Freeze-dried powder
Molecular Mass	Predicted Molecular Mass: 28.2kDa
Endotoxin	<1.0EU per 1ug (determined by the LAL method)
Purity	>95%
Applications	SDS-PAGE; WB; ELISA; IP.
Stability	The thermal stability is described by the loss rate. The loss rate was determined by accelerated thermal degradation test, that is, incubate the protein at 37°C for 48h, and no obvious degradation and precipitation were observed. The loss rate is less than 5% within the expiration date under appropriate storage condition.
Storage	Avoid repeated freeze/thaw cycles. Store at 2-8°C for one month. Aliquot and store at

 Tel: 1-631-559-9269 1-516-512-3133

 Email: info@creative-biomart.com  Fax: 1-631-938-8127

 45-1 Ramsey Road, Shirley, NY 11967, USA

-80°C for 12 months.

Storage buffer Supplied as lyophilized form in PBS, pH7.4, containing 5% sucrose, 0.01% sarcosyl.

Reconstitution Reconstitute in sterile PBS, pH7.2-pH7.4.

Isoelectric Point 9.5

GENE INFORMATION

Gene Name [Khdrbs1 KH domain containing, RNA binding, signal transduction associated 1 \[Mus musculus \(house mouse\) \]](#)

Official Symbol [Khdrbs1](#)

Synonyms Khdrbs1; KH domain containing, RNA binding, signal transduction associated 1; p62; p68; Sam68; KH domain-containing, RNA-binding, signal transduction-associated protein 1; GAP-associated tyrosine phosphoprotein p62; khdrbs1; p21 Ras GTPase-activating protein-associated p62; src associated in mitosis, 68 kDa; src-associated in mitosis 68 kDa protein

Gene ID [20218](#)

mRNA Refseq [NM_011317.4](#)

Protein Refseq [NP_035447.3](#)

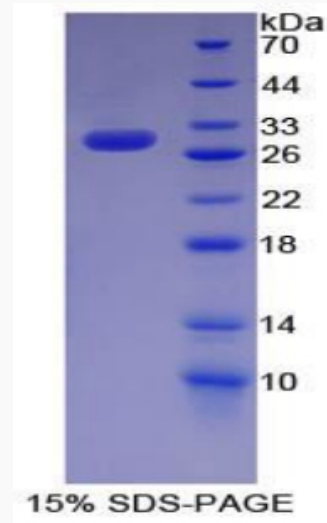
UniProt ID [Q60749](#)

 Tel: 1-631-559-9269 1-516-512-3133

 Email: info@creative-biomart.com  Fax: 1-631-938-8127

 45-1 Ramsey Road, Shirley, NY 11967, USA

SDS-PAGE



Tel: 1-631-559-9269 1-516-512-3133

Email: info@creative-biomart.com Fax: 1-631-938-8127

45-1 Ramsey Road, Shirley, NY 11967, USA