

Recombinant Mouse Kif5a Protein, His/GST-tagged

Cat. No. Kif5a-260M Lot. No. (See product label)

SPECIFICATION

Product Overview	Recombinant Mouse Kif5a(Ala2-Ile211) fused with His/GST tag at N-terminal was expressed in E. coli.
Species	Mouse
Source	E.coli
ProteinLength	Ala2-Ile211
Form	PBS, pH7.4, containing 0.01% SKL, 1mM DTT, 5% Trehalose and Proclin300.
Molecular Mass	50.7kDa
Endotoxin	<1.0EU per 1g (determined by the LAL method)
Purity	> 92%
Applications	Positive Control; Immunogen; SDS-PAGE; WB. If bio-activity of the protein is needed, please check active protein.
Stability	The thermal stability is described by the loss rate. The loss rate was determined by accelerated thermal degradation test, that is, incubate the protein at 37 centigrade for 48h, and no obvious degradation and precipitation were observed. The loss rate is less than 5% within the expiration date under appropriate storage condition.

 Tel: 1-631-559-9269 1-516-512-3133

 Email: info@creative-biomart.com  Fax: 1-631-938-8127

 45-1 Ramsey Road, Shirley, NY 11967, USA

Storage Avoid repeated freeze/thaw cycles. Store at 2-8 centigrade for one month. Aliquot and store at -80 centigrade for 12 months.

Reconstitution Reconstitute in PBS or others.

GENE INFORMATION

Gene Name [Kif5a kinesin family member 5A \[Mus musculus \]](#)

Official Symbol [Kif5a](#)

Synonyms KIF5A; kinesin family member 5A; kinesin heavy chain isoform 5A; NKHC; neuronal kinesin heavy chain; kinesin heavy chain neuron-specific 1; Khc; Kns; Kif5; mKIAA4086; D10Bwg0738e; KIAA4086;

Gene ID [16572](#)

mRNA Refseq [NM_001039000](#)

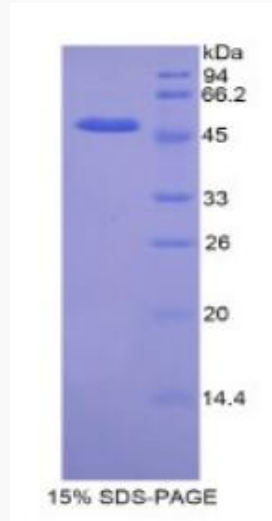
Protein Refseq [NP_001034089](#)

UniProt ID [P33175](#)

 Tel: 1-631-559-9269 1-516-512-3133

 Email: info@creative-biomart.com  Fax: 1-631-938-8127

 45-1 Ramsey Road, Shirley, NY 11967, USA



 Tel: 1-631-559-9269 1-516-512-3133

 Email: info@creative-biomart.com  Fax: 1-631-938-8127

 45-1 Ramsey Road, Shirley, NY 11967, USA