

## Recombinant Rat Kif5a Protein, His/GST-tagged

Cat. No. Kif5a-261R Lot. No. (See product label)

### SPECIFICATION

<b>Product Overview</b>	Recombinant Rat Kif5a(Ile823~Ser1027) fused with His/GST tag at N-terminal was expressed in E. coli.
<b>Species</b>	Rat
<b>Source</b>	E.coli
<b>ProteinLength</b>	Ile823~Ser1027
<b>Description</b>	Neuron-specific member of the kinesin 5 (Kif5) family, consisting of the heavy chains of conventional kinesins; may be a microtubule motor protein; mutation in human homolog causes autosomal dominant spastic paraplegia 10
<b>Form</b>	PBS, pH7.4, containing 0.01% SKL, 1mM DTT, 5% Trehalose and Proclin300.
<b>Molecular Mass</b>	52.84kDa
<b>Endotoxin</b>	<1.0EU per 1g (determined by the LAL method)
<b>Purity</b>	> 95%
<b>Applications</b>	Positive Control; Immunogen; SDS-PAGE; WB. If bio-activity of the protein is needed, please check active protein.
<b>Stability</b>	The thermal stability is described by the loss rate. The loss rate was determined by

 Tel: 1-631-559-9269 1-516-512-3133

 Email: [info@creative-biomart.com](mailto:info@creative-biomart.com)  Fax: 1-631-938-8127

 45-1 Ramsey Road, Shirley, NY 11967, USA

accelerated thermal degradation test, that is, incubate the protein at 37 centigrade for 48h, and no obvious degradation and precipitation were observed. The loss rate is less than 5% within the expiration date under appropriate storage condition.

**Storage**

Avoid repeated freeze/thaw cycles. Store at 2-8 centigrade for one month. Aliquot and store at -80 centigrade for 12 months.

**Reconstitution**

Reconstitute in PBS or others.

## GENE INFORMATION

**Gene Name**

[Kif5a kinesin family member 5A \[ Rattus norvegicus \]](#)

**Official Symbol**

[Kif5a](#)

**Synonyms**

KIF5A; kinesin family member 5A; kinesin heavy chain isoform 5A; NKHC; neuronal kinesin heavy chain; kinesin heavy chain neuron-specific 1;

**Gene ID**

[314906](#)

**mRNA Refseq**

[NM\\_212523](#)

**Protein Refseq**

[NP\\_997688](#)

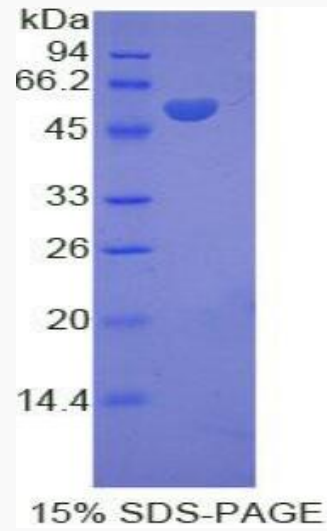
**UniProt ID**

[Q6QLM7](#)

 Tel: 1-631-559-9269 1-516-512-3133

 Email: [info@creative-biomart.com](mailto:info@creative-biomart.com)  Fax: 1-631-938-8127

 45-1 Ramsey Road, Shirley, NY 11967, USA



 Tel: 1-631-559-9269 1-516-512-3133

 Email: [info@creative-biomart.com](mailto:info@creative-biomart.com)  Fax: 1-631-938-8127

 45-1 Ramsey Road, Shirley, NY 11967, USA