

Recombinant Mouse Kiss1 protein, His & GST-tagged

Cat. No. Kiss1-7885M **Lot. No.** (See product label)

SPECIFICATION

Product Overview	Recombinant Mouse Kiss1 aa. (Met1~Gly126) fused with N-terminal His & GST tag was produced in E. coli cells.
Species	Mouse
Source	E.coli
ProteinLength	Met1~Gly126
Form	Freeze-dried powder
Molecular Mass	44kDa as determined by SDS-PAGE reducing conditions.
Endotoxin	<1.0EU per 1ug (determined by the LAL method)
Purity	>92%
Characteristic	The isoelectric point is 8.9.
Applications	Positive Control; Immunogen; SDS-PAGE; WB.
Stability	The thermal stability is described by the loss rate of the target protein. The loss rate was determined by accelerated thermal degradation test, that is, incubate the protein at 37°C for 48h, and no obvious degradation and precipitation were observed. (Referring from China Biological Products Standard, which was calculated by the

 Tel: 1-631-559-9269 1-516-512-3133

 Email: info@creative-biomart.com  Fax: 1-631-938-8127

 45-1 Ramsey Road, Shirley, NY 11967, USA

Arrhenius equation.) The loss of this protein is less than 5% within the expiration date under appropriate storage condition.

Storage

Avoid repeated freeze/thaw cycles. Store at 2-8°C for one month. Aliquot and store at -80°C for 12 months.

Concentration

200µg/mL

Storage Buffer

20mM Tris, 150mM NaCl, pH8.0, containing 1mM EDTA, 1mM DTT, 0.01% sarcosyl, 5% Trehalose and Proclin300.

Reconstitution

Reconstitute in 20mM Tris, 150mM NaCl (pH8.0) to a concentration of 0.1-1.0mg/mL. Do not vortex.

GENE INFORMATION

Gene Name

[Kiss1 KiSS-1 metastasis-suppressor \[Mus musculus \(house mouse\) \]](#)

Official Symbol

[Kiss1](#)

Synonyms

Kiss1; KiSS-1 metastasis-suppressor; kisspeptin; metastatin; metastasis-suppressor KiSS-1; 0610012C01Rik; Kiss1 metastasis-suppressor; kisspeptin-1; metastatin

Gene ID

[280287](#)

mRNA Refseq

[NM_178260.3](#)

Protein Refseq

[NP_839991.2](#)

UniProt ID

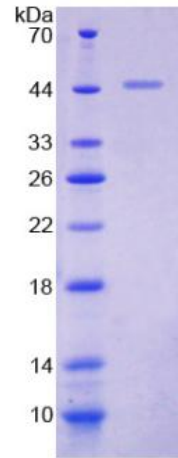
[Q6Y4S4](#)

 Tel: 1-631-559-9269 1-516-512-3133

 Email: info@creative-biomart.com  Fax: 1-631-938-8127

 45-1 Ramsey Road, Shirley, NY 11967, USA

SDS-PAGE



 Tel: 1-631-559-9269 1-516-512-3133

 Email: info@creative-biomart.com  Fax: 1-631-938-8127

 45-1 Ramsey Road, Shirley, NY 11967, USA