

Recombinant Mouse KI protein, His-tagged

Cat. No. KI-1562M Lot. No. (See product label)

SPECIFICATION

| | |
|-------------------------|---|
| Product Overview | Recombinant Mouse KI aa. (Leu59~Phe508) fused with N-terminal His tag was produced in E. coli cells. |
| Species | Mouse |
| Source | E.coli |
| ProteinLength | Leu59~Phe508 |
| Form | Freeze-dried powder |
| Molecular Mass | 53kDa as determined by SDS-PAGE reducing conditions. |
| Endotoxin | <1.0EU per 1ug (determined by the LAL method) |
| Purity | >92% |
| Applications | SDS-PAGE; WB; ELISA; IP; CoIP; Purification; Amine Reactive Labeling. |
| Stability | The thermal stability is described by the loss rate. The loss rate was determined by accelerated thermal degradation test, that is, incubate the protein at 37°C for 48h, and no obvious degradation and precipitation were observed. The loss rate is less than 5% within the expiration date under appropriate storage condition. |
| Storage | Avoid repeated freeze/thaw cycles. Store at 2-8°C for one month. Aliquot and store at |

 Tel: 1-631-559-9269 1-516-512-3133

 Email: info@creative-biomart.com  Fax: 1-631-938-8127

 45-1 Ramsey Road, Shirley, NY 11967, USA

-80°C for 12 months.

Concentration 200µg/mL

Storage buffer 20mM Tris, 150mM NaCl, pH8.0, containing 1mM EDTA, 1mM DTT, 0.01% sarcosyl, 5%Trehalose and Proclin300.

Reconstitution Reconstitute in 20mM Tris, 150mM NaCl (pH8.0) to a concentration of 0.1-1.0 mg/mL. Do not vortex.

Isoelectric Point 8.3

GENE INFORMATION

Gene Name [KI klotho \[Mus musculus \(house mouse\) \]](#)

Official Symbol [KI](#)

Synonyms KI; klotho; alpha-kl; secreted form of Klotho protein

Gene ID [16591](#)

mRNA Refseq [NM_013823.2](#)

Protein Refseq [NP_038851.2](#)

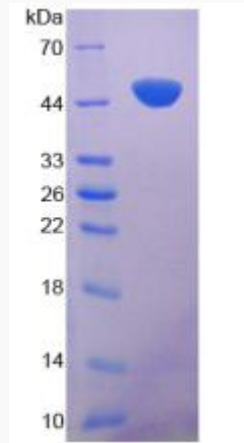
UniProt ID [O35082](#)

 Tel: 1-631-559-9269 1-516-512-3133

 Email: info@creative-biomart.com  Fax: 1-631-938-8127

 45-1 Ramsey Road, Shirley, NY 11967, USA

SDS-PAGE



 Tel: 1-631-559-9269 1-516-512-3133

 Email: info@creative-biomart.com  Fax: 1-631-938-8127

 45-1 Ramsey Road, Shirley, NY 11967, USA