

Active Recombinant Rat KI protein, His-tagged

Cat. No. KI-1714R Lot. No. (See product label)

SPECIFICATION

Product Overview Active Recombinant Rat KI protein(Q9Z2Y9)(517-956 aa), fused with N-terminal His tag, was expressed in E.coli.

Species Rat

Source E.coli

ProteinLength 517-956 aa

Form 20mM Tris, 150mM NaCl, pH8.0, containing 1mM EDTA, 1mM DTT, 0.01% SKL, 5% Trehalose and Proclin300.

Bio-activity Klotho (KL) is a transmembrane protein that, in addition to other effects, provides some control over the sensitivity of the organism to insulin and appears to be involved in aging. The Klotho protein is a novel β -glucuronidase capable of hydrolyzing steroid β -glucuronides. Genetic variants in KLOTHO have been associated with human aging, and Klotho protein has been shown to be a circulating factor detectable in serum that declines with age. The binding of certain fibroblast growth factors (FGF's) viz., FGF19, FGF20, and FGF23, to their fibroblast growth factor receptors, is promoted via their interactions as co-receptors with β -Klotho. Besides, Fibroblast Growth Factor 23 (FGF23) has been identified as an interactor of KL, thus a binding ELISA assay was conducted to detect the interaction of recombinant rat KL and recombinant rat FGF23. Briefly, KL were diluted serially in PBS, with 0.01% BSA (pH 7.4). Duplicate samples of 100 μ L were then transferred to FGF23-coated microtiter

 Tel: 1-631-559-9269 1-516-512-3133

 Email: info@creative-biomart.com  Fax: 1-631-938-8127

 45-1 Ramsey Road, Shirley, NY 11967, USA

wells and incubated for 2h at 37°C. Wells were washed with PBST and incubated for 1h with anti-KL pAb, then aspirated and washed 3 times. After incubation with HRP labelled secondary antibody, wells were aspirated and washed 3 times. With the addition of substrate solution, wells were incubated 15-25 minutes at 37°C. Finally, add 50µ stop solution to the wells and read at 450nm immediately. The binding activity of KL and FGF23 was shown, and this effect was in a dose dependent manner.

Molecular Mass	54.8kDa
Endotoxin	<1.0EU per 1µg (determined by the LAL method).
Purity	> 90%
Storage	Avoid repeated freeze/thaw cycles. Store at 2-8°C for one month. Store at -20°C for 12 months. Aliquot and store at -80°C for 12 months.
Reconstitution	Reconstitute in 20mM Tris, 150mM NaCl (pH8.0) to a concentration of 0.1-1.0 mg/mL. Do not vortex.

GENE INFORMATION

Gene Name	KI Klotho [<i>Rattus norvegicus</i>]
Official Symbol	KI
Synonyms	KL; Klotho; klotho;
Gene ID	83504
mRNA Refseq	NM_031336

 Tel: 1-631-559-9269 1-516-512-3133

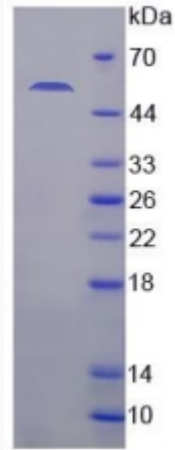
 Email: info@creative-biomart.com  Fax: 1-631-938-8127

 45-1 Ramsey Road, Shirley, NY 11967, USA

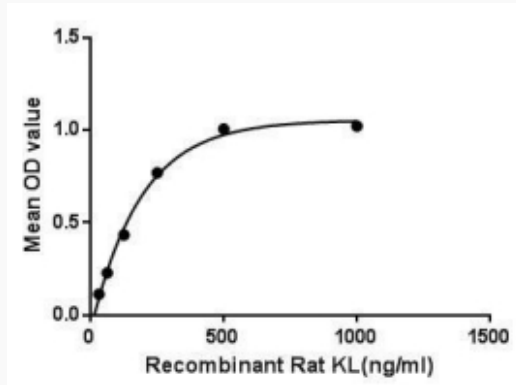
Protein Refseq

NP_112626

SDS-PAGE



Activity



 Tel: 1-631-559-9269 1-516-512-3133

 Email: info@creative-biomart.com  Fax: 1-631-938-8127

 45-1 Ramsey Road, Shirley, NY 11967, USA