

Recombinant Mouse Klb protein, His-tagged

Cat. No. Klb-1561M **Lot. No.** (See product label)

SPECIFICATION

| | |
|-------------------------|---|
| Product Overview | Recombinant Mouse Klb aa. (Ser380~Phe506 (Accession # Q99N32)) fused with N-terminal His tag was produced in E. coli cells. |
| Species | Mouse |
| Source | E.coli |
| ProteinLength | Ser380~Phe506 |
| Form | Freeze-dried powder |
| Molecular Mass | Predicted Molecular Mass: 16.6kDa |
| Endotoxin | <1.0EU per 1ug (determined by the LAL method) |
| Purity | >95% |
| Applications | SDS-PAGE; WB; ELISA; IP. |
| Stability | The thermal stability is described by the loss rate. The loss rate was determined by accelerated thermal degradation test, that is, incubate the protein at 37°C for 48h, and no obvious degradation and precipitation were observed. The loss rate is less than 5% within the expiration date under appropriate storage condition. |
| Storage | Avoid repeated freeze/thaw cycles. Store at 2-8°C for one month. Aliquot and store at |

 Tel: 1-631-559-9269 1-516-512-3133

 Email: info@creative-biomart.com  Fax: 1-631-938-8127

 45-1 Ramsey Road, Shirley, NY 11967, USA

-80°C for 12 months.

Storage buffer Supplied as lyophilized form in PBS, pH 7.4, containing 5% sucrose, 0.01% sarcosyl.

Reconstitution Reconstitute in sterile PBS, pH7.2-pH7.4.

Isoelectric Point 6.1

GENE INFORMATION

Gene Name [Klb klotho beta \[Mus musculus \(house mouse\) \]](#)

Official Symbol [Klb](#)

Synonyms Klb; klotho beta; AV071179; betaKlotho; beta-klotho; BKL; klotho beta-like protein

Gene ID [83379](#)

mRNA Refseq [NM_031180.2](#)

Protein Refseq [NP_112457.1](#)

UniProt ID [Q99N32](#)

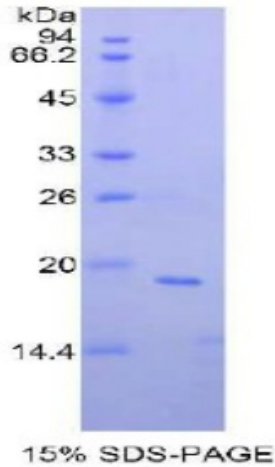
 Tel: 1-631-559-9269 1-516-512-3133

 Email: info@creative-biomart.com  Fax: 1-631-938-8127

 45-1 Ramsey Road, Shirley, NY 11967, USA

SDS-PAGE

Mouse KLb



 Tel: 1-631-559-9269 1-516-512-3133

 Email: info@creative-biomart.com  Fax: 1-631-938-8127

 45-1 Ramsey Road, Shirley, NY 11967, USA