

Recombinant Mouse Klb Protein, His-tagged

Cat. No. Klb-1715M **Lot. No.** (See product label)

SPECIFICATION

Product Overview	Recombinant Mouse Klb Protein (Met515-Leu965) with N-His tag was expressed in E. coli.
Species	Mouse
Source	E.coli
ProteinLength	Met515-Leu965
Description	Predicted to enable fibroblast growth factor binding activity and fibroblast growth factor receptor binding activity. Acts upstream of or within positive regulation of MAPKKK cascade by fibroblast growth factor receptor signaling pathway and positive regulation of cell population proliferation. Predicted to be integral component of membrane. Is expressed in several structures, including extraembryonic component; gut; liver; lung; and trunk mesenchyme. Orthologous to human KLB (klotho beta).
Form	Freeze-dried powder
Molecular Mass	Predicted Molecular Mass: 53.9 kDa
Purity	> 97%
Applications	Positive Control; Immunogen; SDS-PAGE; WB.
Stability	The thermal stability is described by the loss rate. The loss rate was determined by

 Tel: 1-631-559-9269 1-516-512-3133

 Email: info@creative-biomart.com  Fax: 1-631-938-8127

 45-1 Ramsey Road, Shirley, NY 11967, USA

accelerated thermal degradation test, that is, incubate the protein at 37 centigrade for 48h, and no obvious degradation and precipitation were observed. The loss rate is less than 5% within the expiration date under appropriate storage condition.

Storage

Avoid repeated freeze/thaw cycles. Store at 2-8 centigrade for one month. Aliquot and store at -80 centigrade for 12 months.

Storage Buffer

PBS, pH7.4, containing 0.01% SKL, 1mM DTT, 5% Trehalose and Proclin300.

Reconstitution

Reconstitute in PBS or others.

GENE INFORMATION

Gene Name

Klb klotho beta [*Mus musculus* (house mouse)]

Official Symbol

Klb

Synonyms

KLB; klotho beta; beta-klotho; BKL; klotho beta-like protein; AV071179; betaKlotho;

Gene ID

83379

mRNA Refseq

NM_031180

Protein Refseq

NP_112457

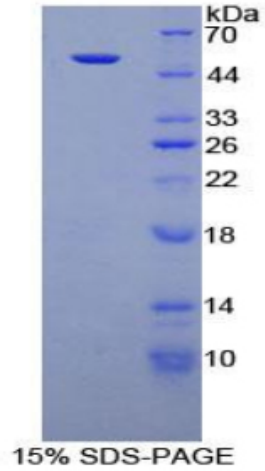
UniProt ID

Q99N32

 Tel: 1-631-559-9269 1-516-512-3133

 Email: info@creative-biomart.com  Fax: 1-631-938-8127

 45-1 Ramsey Road, Shirley, NY 11967, USA



Tel: 1-631-559-9269 1-516-512-3133

Email: info@creative-biomart.com Fax: 1-631-938-8127

45-1 Ramsey Road, Shirley, NY 11967, USA