

Active Recombinant Cynomolgus Monkey Klb Protein (Phe53-Leu997), C-6xHis tagged

Cat. No. Klb-34M Lot. No. (See product label)

SPECIFICATION

Product Overview	Recombinant Cynomolgus Monkey Klotho beta His Protein (Phe53-Leu997) with a C-terminal 6-His tag was expressed in Mouse myeloma cell line.
Species	Monkey
Source	NS0
ProteinLength	Phe53-Leu997
Description	Predicted to enable fibroblast growth factor binding activity and fibroblast growth factor receptor binding activity. Acts upstream of or within positive regulation of MAPKKK cascade by fibroblast growth factor receptor signaling pathway and positive regulation of cell population proliferation. Predicted to be integral component of membrane. Is expressed in several structures, including extraembryonic component; gut; liver; lung; and trunk mesenchyme. Orthologous to human KLB (klotho beta).
Bio-activity	Measured by its binding ability in a functional ELISA. When Recombinant Human FGF-21 is immobilized at 1 µg/mL (100 µL/well), Recombinant Cynomolgus Monkey Klotho beta His-tag binds with an ED50 of 0.05-0.4 µg/mL.
Molecular Mass	Predicted Molecular Mass: 110 kDa SDS-PAGE: 110-130 kDa, under reducing conditions

 Tel: 1-631-559-9269 1-516-512-3133

 Email: info@creative-biomart.com  Fax: 1-631-938-8127

 45-1 Ramsey Road, Shirley, NY 11967, USA

N-terminal Sequence Analysis	Phe53
Endotoxin	< 0.10/μg of the protein by the LAL method.
Purity	>90% by SDS-PAGE visualized with Silver Staining and quantitative densitometry by Coomassie® Blue Staining.
Storage	Use a manual defrost freezer and avoid repeated freeze-thaw cycles. 12 months from date of receipt, -70 centigrade as supplied. 3 months, -70 centigrade under sterile conditions after opening. 1 month, 2 to 8 centigrade under sterile conditions after opening.
Storage Buffer	Supplied as a 0.2 μm filtered solution in PBS, Glycerol and EDTA.
Shipping	The product is shipped with dry ice or equivalent.

GENE INFORMATION

Gene Name	Klb klotho beta [Mus musculus (house mouse)]
Official Symbol	Klb
Synonyms	Klb; klotho beta; betaKlotho; beta-klotho; BKL; klotho beta-like protein
Gene ID	83379
mRNA Refseq	NM_031180
Protein Refseq	NP_112457

 Tel: 1-631-559-9269 1-516-512-3133

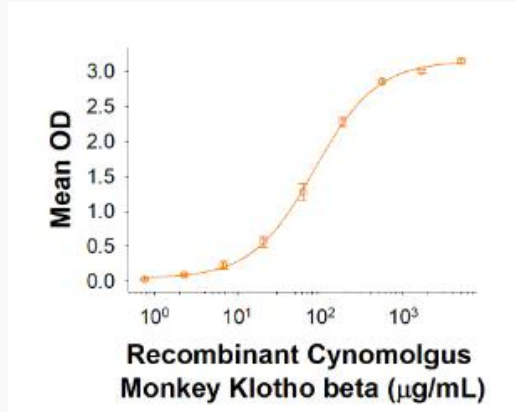
 Email: info@creative-biomart.com  Fax: 1-631-938-8127

 45-1 Ramsey Road, Shirley, NY 11967, USA

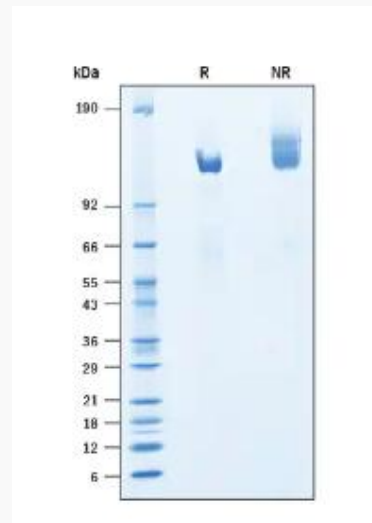
UniProt ID

Q920J2

Binding Activity



SDS-PAGE



Tel: 1-631-559-9269 1-516-512-3133

Email: info@creative-biomart.com Fax: 1-631-938-8127

45-1 Ramsey Road, Shirley, NY 11967, USA