

Recombinant Mouse Klf10 protein, His & T7-tagged

Cat. No. Klf10-793M **Lot. No.** (See product label)

SPECIFICATION

Product Overview	Recombinant Mouse Klf10 aa. (Pro206~Pro473 (Accession # O89091)) fused with N-terminal His & T7 tag was produced in E. coli cells.
Species	Mouse
Source	E.coli
ProteinLength	Pro206~Pro473
Form	Freeze-dried powder
Molecular Mass	Predicted Molecular Mass: 32.7kDa
Endotoxin	<1.0EU per 1g (determined by the LAL method)
Purity	>95%
Characteristic	The isoelectric point is 10.
Applications	SDS-PAGE; WB; ELISA; IP.
Stability	The thermal stability is described by the loss rate. The loss rate was determined by accelerated thermal degradation test, that is, incubate the protein at 37°C for 48h, and no obvious degradation and precipitation were observed. The loss rate is less than 5% within the expiration date under appropriate storage condition.

 Tel: 1-631-559-9269 1-516-512-3133

 Email: info@creative-biomart.com  Fax: 1-631-938-8127

 45-1 Ramsey Road, Shirley, NY 11967, USA

Storage	Avoid repeated freeze/thaw cycles. Store at 2-8°C for one month. Aliquot and store at -80°C for 12 months.
Storage buffer	Supplied as lyophilized form in PBS, pH7.4, containing 5% trehalose, 0.01% sarcosyl.
Reconstitution	Reconstitute in sterile PBS, pH7.2-pH7.4.

GENE INFORMATION

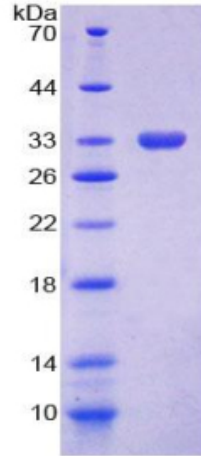
Gene Name	Klf10 Kruppel-like factor 10 [<i>Mus musculus</i> (house mouse)]
Official Symbol	Klf10
Synonyms	Tieg; mGIF; Egral; Tieg1; EGR[a]; Gdnfif; TIEG-1; AI115143; GDNF-inducible factor; TGFB inducible early growth response 1; TGFB-inducible early growth response protein 1; transcription factor GIF; transforming growth factor-beta-inducible early growth response protein 1; Krueppel-like factor 10
Gene ID	21847
mRNA Refseq	NM_001289471.1
Protein Refseq	NP_001276400.1
UniProt ID	O89091

 Tel: 1-631-559-9269 1-516-512-3133

 Email: info@creative-biomart.com  Fax: 1-631-938-8127

 45-1 Ramsey Road, Shirley, NY 11967, USA

SDS-PAGE



 Tel: 1-631-559-9269 1-516-512-3133

 Email: info@creative-biomart.com  Fax: 1-631-938-8127

 45-1 Ramsey Road, Shirley, NY 11967, USA