

Recombinant Mouse Klf4 protein, His & T7-tagged

Cat. No. Klf4-5856M Lot. No. (See product label)

SPECIFICATION

Product Overview	Recombinant Mouse Klf4 aa. (Ser240~His478 (Accession # Q60793)) fused with N-terminal His & T7 tag was produced in E. coli cells.
Species	Mouse
Source	E.coli
ProteinLength	Ser240~His478
Form	Freeze-dried powder
Molecular Mass	Predicted Molecular Mass: 30.4kDa
Endotoxin	<1.0EU per 1g (determined by the LAL method)
Purity	>95%
Characteristic	The isoelectric point is 9.5.
Applications	SDS-PAGE; WB; ELISA; IP.
Stability	The thermal stability is described by the loss rate. The loss rate was determined by accelerated thermal degradation test, that is, incubate the protein at 37°C for 48h, and no obvious degradation and precipitation were observed. The loss rate is less than 5% within the expiration date under appropriate storage condition.

 Tel: 1-631-559-9269 1-516-512-3133

 Email: info@creative-biomart.com  Fax: 1-631-938-8127

 45-1 Ramsey Road, Shirley, NY 11967, USA

Storage	Avoid repeated freeze/thaw cycles. Store at 2-8°C for one month. Aliquot and store at -80°C for 12 months.
Storage buffer	Supplied as lyophilized form in PBS, pH7.4, containing 5% trehalose, 0.01% sarcosyl.
Reconstitution	Reconstitute in sterile PBS, pH7.2-pH7.4.

GENE INFORMATION

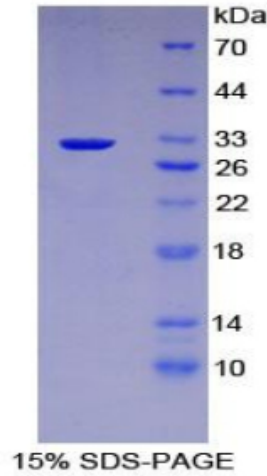
Gene Name	Klf4 Kruppel-like factor 4 (gut) [<i>Mus musculus</i> (house mouse)]
Official Symbol	Klf4
Synonyms	EZF; Zie; Gklf; Kruppel-like factor 4 (Gut enriched kruppel-like factor) (Epithelial zinc-finger protein EZF); epithelial zinc finger protein EZF; gut-enriched krueppel-like factor; Krueppel-like factor 4
Gene ID	16600
mRNA Refseq	NM_010637.3
Protein Refseq	NP_034767.2
UniProt ID	Q60793

 Tel: 1-631-559-9269 1-516-512-3133

 Email: info@creative-biomart.com  Fax: 1-631-938-8127

 45-1 Ramsey Road, Shirley, NY 11967, USA

SDS-PAGE



 Tel: 1-631-559-9269 1-516-512-3133

 Email: info@creative-biomart.com  Fax: 1-631-938-8127

 45-1 Ramsey Road, Shirley, NY 11967, USA