

Recombinant Mouse Klk1 protein, His & GST-tagged

Cat. No. Klk1-5678M Lot. No. (See product label)

SPECIFICATION

Product Overview	Recombinant Mouse Klk1 aa. (Gly27~Asp261) fused with N-terminal His & GST tag was produced in E. coli cells.
Species	Mouse
Source	E.coli
ProteinLength	Gly27~Asp261
Description	<p>This gene encodes a member of the kallikrein subfamily of serine proteases that are involved in diverse physiological functions such as skin desquamation, tooth enamel formation, seminal liquefaction, synaptic neural plasticity and brain function. The encoded preproprotein undergoes proteolytic cleavage of the activation peptide to generate the functional enzyme. Mice lacking the encoded protein are unable to generate significant levels of kinins in most tissues, develop cardiovascular abnormalities and exhibit hypercalciuria of renal origin. This gene is located in a cluster of several related kallikrein genes on chromosome 7. Alternative splicing results in multiple transcript variants encoding different isoforms, some of which may undergo similar processing.</p>
Form	Freeze-dried powder
Molecular Mass	56kDa as determined by SDS-PAGE reducing conditions.
Endotoxin	<1.0EU per 1g (determined by the LAL method)

 Tel: 1-631-559-9269 1-516-512-3133

 Email: info@creative-biomart.com  Fax: 1-631-938-8127

 45-1 Ramsey Road, Shirley, NY 11967, USA

Purity	>80%
Characteristic	The isoelectric point is 5.7.
Applications	Positive Control; Immunogen; SDS-PAGE; WB.
Stability	The thermal stability is described by the loss rate. The loss rate was determined by accelerated thermal degradation test, that is, incubate the protein at 37°C for 48h, and no obvious degradation and precipitation were observed. The loss rate is less than 5% within the expiration date under appropriate storage condition.
Storage	Avoid repeated freeze/thaw cycles. Store at 2-8°C for one month. Aliquot and store at -80°C for 12 months.
Concentration	200µg/mL
Storage buffer	20mM Tris, 150mM NaCl, pH8.0, containing 1mM EDTA, 1mM DTT, 0.01% sarcosyl, 5%Trehalose and Proclin300.
Reconstitution	Reconstitute in 20mM Tris, 150mM NaCl (pH8.0) to a concentration of 0.1-1.0 mg/mL. Do not vortex.

GENE INFORMATION

Gene Name	Klk1 kallikrein 1 [<i>Mus musculus</i> (house mouse)]
Official Symbol	Klk1
Synonyms	Klk1; kallikrein 1; Kal; Klk6; KAL-B; mGk-6; Klk1b6; 0610007D04Rik; kallikrein-1; glandular kallikrein K1; kallikrein renal/pancreas/salivary; tissue kallikrein-6; true tissue kallikrein

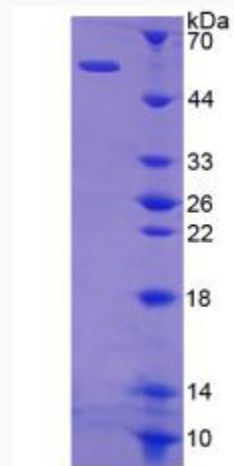
 Tel: 1-631-559-9269 1-516-512-3133

 Email: info@creative-biomart.com  Fax: 1-631-938-8127

 45-1 Ramsey Road, Shirley, NY 11967, USA

Gene ID	16612
mRNA Refseq	NM_001320331.1
Protein Refseq	NP_001307260.1
UniProt ID	P15947

SDS-PAGE



Tel: 1-631-559-9269 1-516-512-3133

Email: info@creative-biomart.com Fax: 1-631-938-8127

45-1 Ramsey Road, Shirley, NY 11967, USA