

## Recombinant Rat Klk1 protein, His-tagged

**Cat. No.** Klk1-5679R    **Lot. No.** (See product label)

### SPECIFICATION

<b>Product Overview</b>	Recombinant Rat Klk1 aa. (Pro2~Glu86) fused with N-terminal His tag was produced in E. coli cells.
<b>Species</b>	Rat
<b>Source</b>	E.coli
<b>ProteinLength</b>	Pro2~Glu86
<b>Description</b>	Serine protease; involved in processing of bioactive peptides.
<b>Form</b>	Freeze-dried powder
<b>Molecular Mass</b>	14kDa as determined by SDS-PAGE reducing conditions.
<b>Endotoxin</b>	<1.0EU per 1g (determined by the LAL method)
<b>Purity</b>	>95%
<b>Characteristic</b>	The isoelectric point is 8.3.
<b>Applications</b>	SDS-PAGE; WB; ELISA; IP; CoIP; Purification; Amine Reactive Labeling.
<b>Stability</b>	The thermal stability is described by the loss rate. The loss rate was determined by accelerated thermal degradation test, that is, incubate the protein at 37°C for 48h,

 Tel: 1-631-559-9269    1-516-512-3133

 Email: [info@creative-biomart.com](mailto:info@creative-biomart.com)     Fax: 1-631-938-8127

 45-1 Ramsey Road, Shirley, NY 11967, USA

and no obvious degradation and precipitation were observed. The loss rate is less than 5% within the expiration date under appropriate storage condition.

**Storage**

Avoid repeated freeze/thaw cycles. Store at 2-8°C for one month. Aliquot and store at -80°C for 12 months.

**Concentration**

200µg/mL

**Storage buffer**

20mM Tris, 150mM NaCl, pH8.0, containing 1mM EDTA, 1mM DTT, 0.01% sarcosyl, 5%Trehalose and Proclin300.

**Reconstitution**

Reconstitute in 20mM Tris, 150mM NaCl (pH8.0) to a concentration of 0.1-1.0 mg/mL. Do not vortex.

## GENE INFORMATION

**Gene Name**

Klk1 kallikrein 1 [ *Rattus norvegicus* (Norway rat) ]

**Official Symbol**

Klk1

**Synonyms**

Klk1; kallikrein 1; Kal; KALA; Klk5; Klk7; Klk11; Klna3; RGK-7; Klk1c7; RSKG-7; RATKALA; Kallikrein 1, renal/pancreas/salivary; esterase B; glandular kallikrein-7, submandibular/renal; kallikrein 1-like peptidase; kallikrein 1-related peptidase C7; kallikrein 5; kallikrein 7; kallikrein a3; kallikrein-related protein K1; proteinase A; renal kallikrein; tissue kallikrein

**Gene ID**

24523

**mRNA Refseq**

NM\_012593.1

**Protein Refseq**

NP\_036725.1

 Tel: 1-631-559-9269 1-516-512-3133

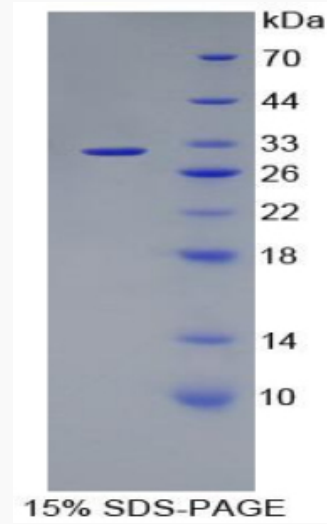
 Email: [info@creative-biomart.com](mailto:info@creative-biomart.com)  Fax: 1-631-938-8127

 45-1 Ramsey Road, Shirley, NY 11967, USA

UniProt ID

P36373

SDS-PAGE



 Tel: 1-631-559-9269 1-516-512-3133

 Email: [info@creative-biomart.com](mailto:info@creative-biomart.com)  Fax: 1-631-938-8127

 45-1 Ramsey Road, Shirley, NY 11967, USA