

Active Recombinant Rat Klk10 protein, His-GST-tagged

Cat. No. Klk10-2110R Lot. No. (See product label)

SPECIFICATION

Product Overview	Active Recombinant Rat Klk10 protein(Q9JI85)(26~106 aa), fused with N-terminal His tag and GST tag, was expressed in E.coli.
Species	Rat
Source	E.coli
ProteinLength	26-106 aa
Form	Lyophilized from sterile 20mM Tris, 150mM NaCl, pH8.0, containing 1mM EDTA, 1mM DTT, 0.01% SKL, 5% Trehalose and Proclin300.
Bio-activity	Nucb2 (Nucleobindin-2), a calcium-binding protein, is further cleaved into NES1 (Nesfatin-1). NES1 is an anorexigenic peptide and seems to participate in hypothalamic pathways regulating food intake and energy homeostasis, acting in a leptin-independent manner. GADD45A (Growth arrest and DNA damage-inducible protein GADD45 alpha) has been identified as an interactor of Nucb2. Besides, Growth Arrest And DNA Damage Inducible Protein Beta (GADD45b) has been identified as an interactor of NES1, thus a binding ELISA assay was conducted to detect the interaction of recombinant rat NES1 and recombinant rat GADD45b. Briefly, NES1 were diluted serially in PBS, with 0.01% BSA (pH 7.4). Duplicate samples of 100µL were then transferred to GADD45b-coated microtiter wells and incubated for 2h at 37°C. Wells were washed with PBST and incubated for 1h with anti-NES1 pAb, then aspirated and washed 3 times. After incubation with HRP

 Tel: 1-631-559-9269 1-516-512-3133

 Email: info@creative-biomart.com  Fax: 1-631-938-8127

 45-1 Ramsey Road, Shirley, NY 11967, USA

labelled secondary antibody, wells were aspirated and washed 3 times. With the addition of substrate solution, wells were incubated 15-25 minutes at 37°C. Finally, add 50µ stop solution to the wells and read at 450nm immediately. The binding activity of NES1 and GADD45b was shown, and this effect was in a dose dependent manner.

Molecular Mass	39.5KDa
Endotoxin	<1.0EU per 1µg (determined by the LAL method).
Purity	> 97% as determined by SDS-PAGE.
Storage	Avoid repeated freeze/thaw cycles. Store at -20°C for 12 months. Aliquot and store at -80°C for 12 months.
Reconstitution	Reconstitute in 20mM Tris, 150mM NaCl (pH8.0) to a concentration of 0.1-1.0 mg/mL. Do not vortex.

GENE INFORMATION

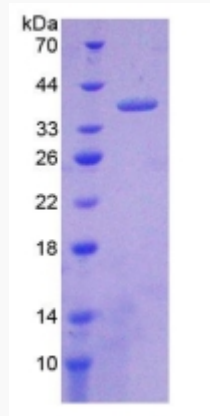
Gene Name	Klk10 kallikrein related-peptidase 10 [Rattus norvegicus]
Official Symbol	Klk10
Synonyms	KLK10; kallikrein related-peptidase 10; kallikrein-10; kallikrein 10;
Gene ID	292850
mRNA Refseq	NM_001004100
Protein Refseq	NP_001004100

 Tel: 1-631-559-9269 1-516-512-3133

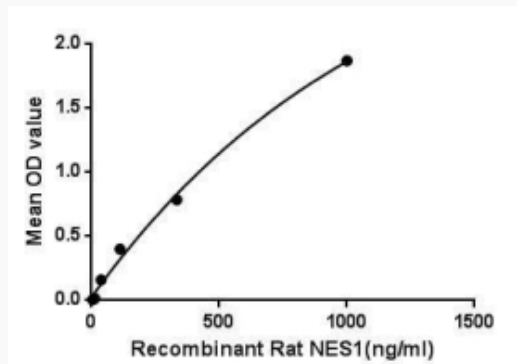
 Email: info@creative-biomart.com  Fax: 1-631-938-8127

 45-1 Ramsey Road, Shirley, NY 11967, USA

SDS-PAGE



Activity



 Tel: 1-631-559-9269 1-516-512-3133

 Email: info@creative-biomart.com  Fax: 1-631-938-8127

 45-1 Ramsey Road, Shirley, NY 11967, USA