

Active Recombinant Mouse Klk10 protein, His-GST-tagged

Cat. No. Klk10-289M **Lot. No.** (See product label)

SPECIFICATION

Product Overview	Active Recombinant Mouse Klk10 protein(P81117)(26~106 aa), fused with N-terminal His tag and GST tag, was expressed in E.coli.
Species	Mouse
Source	E.coli
ProteinLength	26-106 aa
Form	Lyophilized from sterile 20mM Tris, 150mM NaCl, pH8.0, containing 1mM EDTA, 1mM DTT, 0.01% SKL, 5% Trehalose and Proclin300.
Bio-activity	Nucb2 (Nucleobindin-2), a calcium-binding protein, is further cleaved into NES1 (Nesfatin-1). NES1 is an anorexigenic peptide and seems to participate in hypothalamic pathways regulating food intake and energy homeostasis, acting in a leptin-independent manner. GADD45A (Growth arrest and DNA damage-inducible protein GADD45 alpha) has been identified as an interactor of Nucb2. Besides, rat GADD45A shares similarities with mouse NES1 in amino acid sequence with the identity of 98%. Thus a binding ELISA assay was conducted to detect the interaction of recombinant mouse NES1 and recombinant rat GADD45A. Briefly, NES1 were diluted serially in PBS, with 0.01%BSA (pH 7.4). Duplicate samples of 100uL NES1 were then transferred to GADD45A-coated microtiter wells and incubated for 2h at 37°C. Wells were washed with PBST and incubated for 1h with anti-NES1 pAb, then aspirated and washed 3 times. After incubation with HRP labelled secondary

 Tel: 1-631-559-9269 1-516-512-3133

 Email: info@creative-biomart.com  Fax: 1-631-938-8127

 45-1 Ramsey Road, Shirley, NY 11967, USA

antibody, wells were aspirated and washed 3 times. With the addition of substrate solution, wells were incubated 15-25 minutes at 37°C. Finally, add 50μ stop solution to the wells and read at 450nm immediately. The binding activity of NES1 and GADD45A was shown, and this effect was in a dose dependent manner.

Molecular Mass	39.5kDa
Purity	> 97% as determined by SDS-PAGE.
Storage	Avoid repeated freeze/thaw cycles. Store at -20°C for 12 months. Aliquot and store at -80°C for 12 months.
Reconstitution	Reconstitute in 10mM PBS (pH7.4) to a concentration of 0.1-1.0 mg/mL. Do not vortex.

GENE INFORMATION

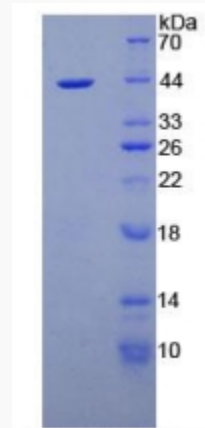
Gene Name	Klk10 kallikrein related-peptidase 10 [Mus musculus]
Official Symbol	Klk10
Synonyms	KLK10; kallikrein related-peptidase 10; kallikrein-10; kallikrein 10; NES1; PRSSL1; 2300002A13Rik;
Gene ID	69540
mRNA Refseq	NM_133712
Protein Refseq	NP_598473

 Tel: 1-631-559-9269 1-516-512-3133

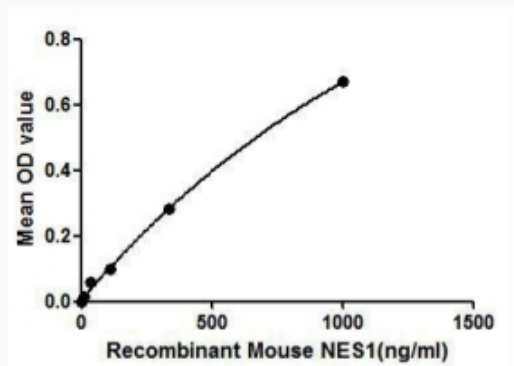
 Email: info@creative-biomart.com  Fax: 1-631-938-8127

 45-1 Ramsey Road, Shirley, NY 11967, USA

SDS-PAGE



Activity



 Tel: 1-631-559-9269 1-516-512-3133

 Email: info@creative-biomart.com  Fax: 1-631-938-8127

 45-1 Ramsey Road, Shirley, NY 11967, USA