

## Recombinant Mouse Klk13 protein, His & T7-tagged

**Cat. No.** Klk13-8000M    **Lot. No.** (See product label)

### SPECIFICATION

<b>Product Overview</b>	Recombinant Mouse Klk13 aa. (Val25~Ala261) fused with N-terminal His & T7 tag was produced in E. coli cells.
<b>Species</b>	Mouse
<b>Source</b>	E.coli
<b>ProteinLength</b>	Val25~Ala261
<b>Description</b>	Kallikreins are serine proteases encoded by a cluster of highly related genes on chromosome 7. When genomic sequence became available, it was possible to clarify the gene-to-sequence relationship for this family. Until January, 2006, NM_010115 was called kallikrein 13. After that time, NM_001039042 was called Klk13 and NM_010115 was called Klk1b26.
<b>Form</b>	Freeze-dried powder
<b>Molecular Mass</b>	Predicted Molecular Mass: 29.8kDa
<b>Endotoxin</b>	<1.0EU per 1ug (determined by the LAL method)
<b>Purity</b>	>90%
<b>Characteristic</b>	The isoelectric point is 8.3.

 Tel: 1-631-559-9269    1-516-512-3133

 Email: [info@creative-biomart.com](mailto:info@creative-biomart.com)     Fax: 1-631-938-8127

 45-1 Ramsey Road, Shirley, NY 11967, USA

<b>Applications</b>	SDS-PAGE; WB; ELISA; IP
<b>Stability</b>	The thermal stability is described by the loss rate of the target protein. The loss rate was determined by accelerated thermal degradation test, that is, incubate the protein at 37°C for 48h, and no obvious degradation and precipitation were observed. (Referring from China Biological Products Standard, which was calculated by the Arrhenius equation.) The loss of this protein is less than 5% within the expiration date under appropriate storage condition.
<b>Storage</b>	Avoid repeated freeze/thaw cycles. Store at 2-8°C for one month. Aliquot and store at -80°C for 12 months.
<b>Storage Buffer</b>	Supplied as lyophilized form in PBS, pH7.4, containing 5% trehalose, 0.01% sarcosyl.
<b>Reconstitution</b>	Reconstitute in sterile PBS, pH7.2-pH7.4.

## GENE INFORMATION

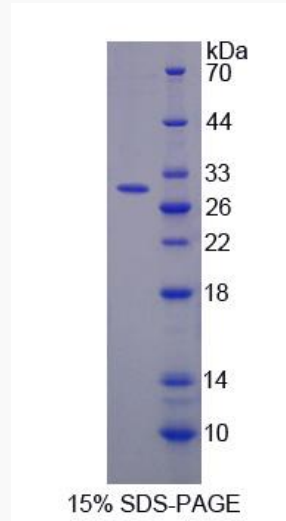
<b>Gene Name</b>	Klk13 kallikrein related-peptidase 13 [ <i>Mus musculus</i> (house mouse) ]
<b>Official Symbol</b>	Klk13
<b>Synonyms</b>	Klk13; kallikrein related-peptidase 13; mGk-13; Egfbp-2; kallikrein-13; kallikrein 13
<b>Gene ID</b>	626834
<b>mRNA Refseq</b>	NM_001039042.2
<b>Protein Refseq</b>	NP_001034131.2
<b>UniProt ID</b>	Q8CGR6

 Tel: 1-631-559-9269 1-516-512-3133

 Email: [info@creative-biomart.com](mailto:info@creative-biomart.com)  Fax: 1-631-938-8127

 45-1 Ramsey Road, Shirley, NY 11967, USA

**SDS-PAGE**



 Tel: 1-631-559-9269 1-516-512-3133

 Email: [info@creative-biomart.com](mailto:info@creative-biomart.com)  Fax: 1-631-938-8127

 45-1 Ramsey Road, Shirley, NY 11967, USA