

Recombinant Mouse Klk6 Protein, His-SUMO-tagged

Cat. No. Klk6-802M Lot. No. (See product label)

SPECIFICATION

Product Overview	Recombinant Mouse Klk6 Protein(24-253 aa), fused with N-terminal His tag and SUMO tag, was expressed in E.coli.
Species	Mouse
Source	E.coli
ProteinLength	24-253 aa
Form	PBS, pH7.4, containing 0.01% SKL, 5% Trehalose.
Molecular Mass	39.5kDa
Endotoxin	<1.0EU per 1µg (determined by the LAL method).
Purity	>90%
Storage	Avoid repeated freeze/thaw cycles. Store at 2-8°C for one month. Store at -20°C for 12 months. Aliquot and store at -80°C for 12 months.
Reconstitution	Reconstitute in 10mM PBS (pH7.4) to a concentration of 0.1-1.0 mg/mL. Do not vortex.

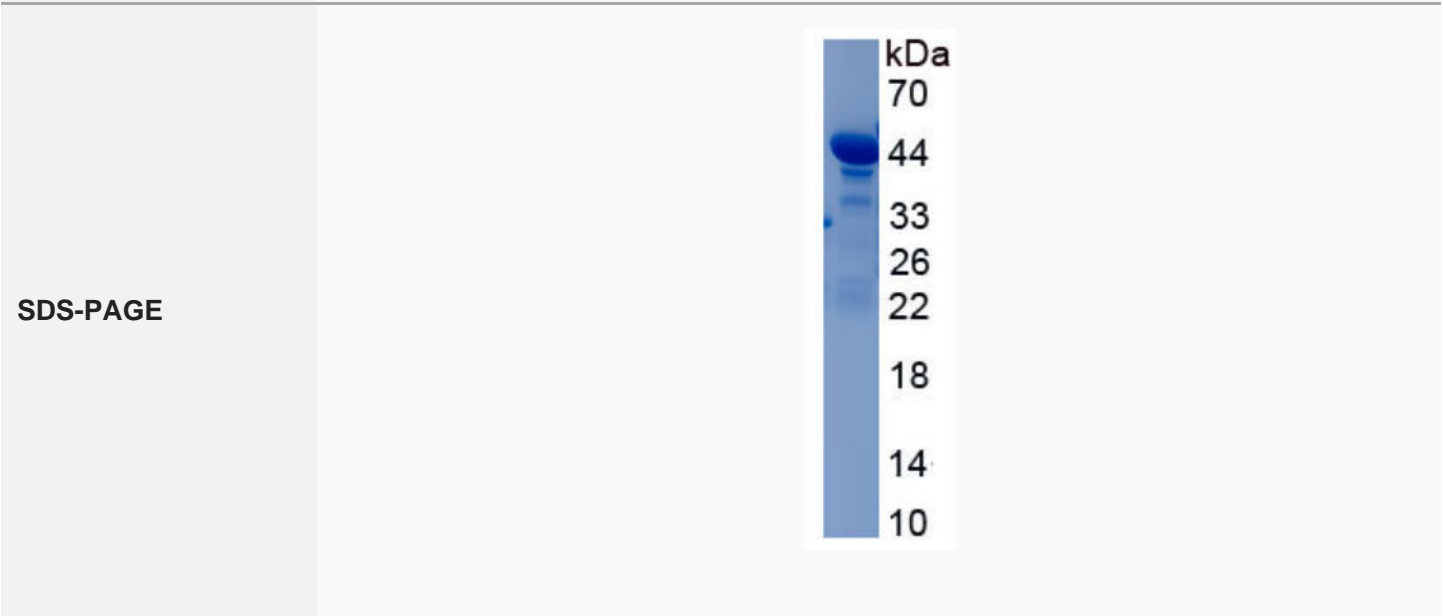
GENE INFORMATION

 Tel: 1-631-559-9269 1-516-512-3133

 Email: info@creative-biomart.com  Fax: 1-631-938-8127

 45-1 Ramsey Road, Shirley, NY 11967, USA

Gene Name	Klk6 kallikrein related-peptidase 6 [<i>Mus musculus</i>]
Official Symbol	Klk6
Synonyms	KLK6; kallikrein related-peptidase 6; protease M; kallikrein 6; kallikrein 29; protease, serine, 9; protease, serine, 18; brain serine protease; myofibril-bound protease; myelencephalon-specific protease; BSP; MSP; Bssp; Klk29; Prss9; Prss18; A1849898; neurosin;
Gene ID	19144
mRNA Refseq	NM_001164696
Protein Refseq	NP_001158168



Tel: 1-631-559-9269 1-516-512-3133

Email: info@creative-biomart.com Fax: 1-631-938-8127

45-1 Ramsey Road, Shirley, NY 11967, USA