

Recombinant Rat Klk6 protein, His & GST-tagged

Cat. No. Klk6-802R **Lot. No.** (See product label)

SPECIFICATION

Product Overview	Recombinant Rat Klk6 aa. (Ile26~Pro261 (Accession # P36374)) fused with N-terminal His & GST tag was produced in E. coli cells.
Species	Rat
Source	E.coli
ProteinLength	Ile26~Pro261
Form	Freeze-dried powder
Molecular Mass	Predicted Molecular Mass: 57.9kDa
Endotoxin	<1.0EU per 1g (determined by the LAL method)
Purity	>95%
Characteristic	The isoelectric point is 6.
Applications	SDS-PAGE; WB; ELISA; IP.
Stability	The thermal stability is described by the loss rate. The loss rate was determined by accelerated thermal degradation test, that is, incubate the protein at 37°C for 48h, and no obvious degradation and precipitation were observed. The loss rate is less than 5% within the expiration date under appropriate storage condition.

 Tel: 1-631-559-9269 1-516-512-3133

 Email: info@creative-biomart.com  Fax: 1-631-938-8127

 45-1 Ramsey Road, Shirley, NY 11967, USA

Storage	Avoid repeated freeze/thaw cycles. Store at 2-8°C for one month. Aliquot and store at -80°C for 12 months.
Storage buffer	Supplied as lyophilized form in PBS, pH7.4, containing 5% sucrose, 0.01% sarcosyl.
Reconstitution	Reconstitute in sterile PBS, pH7.2-pH7.4.

GENE INFORMATION

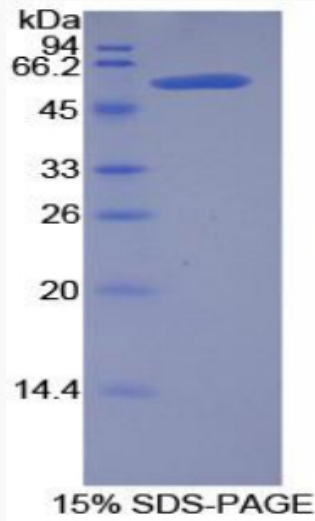
Gene Name	Klk6 kallikrein related-peptidase 6 [Rattus norvegicus (Norway rat)]
Official Symbol	Klk6
Synonyms	Klni; Prss9; kallikrein 6 (neurosin); kallikrein 6 (neurosin, zyme); kallikrein i; protease serine 9 (neurosin); protease, serine, 9; kallikrein-6
Gene ID	29245
mRNA Refseq	NM_019175.1
Protein Refseq	NP_062048.1
UniProt ID	P36374

 Tel: 1-631-559-9269 1-516-512-3133

 Email: info@creative-biomart.com  Fax: 1-631-938-8127

 45-1 Ramsey Road, Shirley, NY 11967, USA

SDS-PAGE



 Tel: 1-631-559-9269 1-516-512-3133

 Email: info@creative-biomart.com  Fax: 1-631-938-8127

 45-1 Ramsey Road, Shirley, NY 11967, USA