

## Active Recombinant Mouse Klk6 Protein, His-tagged

Cat. No. Klk6-803M Lot. No. (See product label)

### SPECIFICATION

<b>Product Overview</b>	Active Recombinant Mouse Klk6 Protein(24-253 aa), fused with N-terminal His tag, was expressed in HEK293.
<b>Species</b>	Mouse
<b>Source</b>	HEK293
<b>ProteinLength</b>	24-253 aa
<b>Form</b>	PBS, pH7.4, containing 5% Trehalose.
<b>Bio-activity</b>	<p>Tissue kallikreins are a family of extracellular serine proteases consisting of 15 members. Tissue kallikreins have attracted great interest as potential biomarkers for various cancers, including prostate, ovarian, breast, testicular, and lung. Human Kallikrein 6 (hKLK6) is a member of tissue kallikrein family observed in breast and brain tissues, colon carcinoma cells, and oligodendrocytes. Known protein substrates of hKLK6 are myelin basic protein, the precursor of the A beta amyloid peptide, and plasminogen. Its physiological functions may include the participation in demyelination processes as well as in the progression of inflammatory disease of the CNS. The activity assay of recombinant mouse KLK6 was measured by its ability to cleave the fluorogenic peptide substrate Boc-QAR-AMC. The rmKLK6 was activated by Lysyl-endopeptidase in the activation buffer 50 mM Tris, 0.05% (w/v) Brij-35, pH 8.0, of which equal volumes of 200 ug/ml rmKLK6 and 2.5 mU/ml Lysyl-endopeptidase were combined and incubated at room temperature for 30 minutes.</p>

 Tel: 1-631-559-9269 1-516-512-3133

 Email: [info@creative-biomart.com](mailto:info@creative-biomart.com)  Fax: 1-631-938-8127

 45-1 Ramsey Road, Shirley, NY 11967, USA

The activated rmKLK6 was diluted to 3 ug/ml in assay buffer and start the reaction by adding 50  $\mu$  of 200  $\mu$ M substrate. Read at excitation and emission wavelengths of 380 nm and 460 nm(top read), respectively, in kinetic mode for 5 minutes. The specific activity of recombinant mouse KLK6 is >6000 pmol/min/g.

**Molecular Mass** 27.4kDa

**Endotoxin** <1.0EU per 1 $\mu$ g (determined by the LAL method).

**Purity** >90%

**Storage** Avoid repeated freeze/thaw cycles. Store at 2-8°C for one month. Store at -20°C for 12 months. Aliquot and store at -80°C for 12 months.

**Reconstitution** Reconstitute in 10mM PBS (pH7.4) to a concentration of 0.1-1.0 mg/mL. Do not vortex.

## GENE INFORMATION

**Gene Name** [Klk6 kallikrein related-peptidase 6 \[ Mus musculus \]](#)

**Official Symbol** [Klk6](#)

**Synonyms** KLK6; kallikrein related-peptidase 6; protease M; kallikrein 6; kallikrein 29; protease, serine, 9; protease, serine, 18; brain serine protease; myofibril-bound protease; myelencephalon-specific protease; BSP; MSP; Bssp; Klk29; Prss9; Prss18; AI849898; neurosin;

**Gene ID** [19144](#)

**mRNA Refseq** [NM\\_001164696](#)

 Tel: 1-631-559-9269 1-516-512-3133

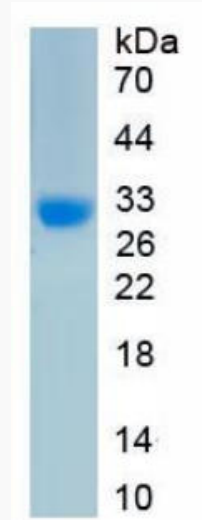
 Email: [info@creative-biomart.com](mailto:info@creative-biomart.com)  Fax: 1-631-938-8127


 45-1 Ramsey Road, Shirley, NY 11967, USA

Protein Refseq

NP\_001158168

SDS-PAGE



 Tel: 1-631-559-9269 1-516-512-3133

 Email: [info@creative-biomart.com](mailto:info@creative-biomart.com)  Fax: 1-631-938-8127

 45-1 Ramsey Road, Shirley, NY 11967, USA