

Recombinant Mouse Klk7 protein, His & GST-tagged

Cat. No. Klk7-1960M **Lot. No.** (See product label)

SPECIFICATION

Product Overview	Recombinant Mouse Klk7 aa. (Tyr30-Arg249 (Accession # Q91VE3)) fused with N-terminal His & GST tag was produced in E. coli cells.
Species	Mouse
Source	E.coli
ProteinLength	Tyr30-Arg249
Description	This gene encodes a member of the kallikrein subfamily of serine proteases that are involved in diverse physiological functions such as skin desquamation, tooth enamel formation, seminal liquefaction, synaptic neural plasticity and brain function. The encoded preproprotein undergoes proteolytic cleavage of the activation peptide to generate the functional enzyme. This gene is located in a cluster of several related kallikrein genes on chromosome 7.
Form	Freeze-dried powder
Molecular Mass	Predicted Molecular Mass: 51.4kDa
Endotoxin	<1.0EU per 1ug (determined by the LAL method)
Purity	> 95%
Characteristic	The isoelectric point is 8.1.

 Tel: 1-631-559-9269 1-516-512-3133

 Email: info@creative-biomart.com  Fax: 1-631-938-8127

 45-1 Ramsey Road, Shirley, NY 11967, USA

Applications	SDS-PAGE; WB; ELISA; IP.
Stability	The thermal stability is described by the loss rate of the target protein. The loss rate was determined by accelerated thermal degradation test, that is, incubate the protein at 37°C for 48h, and no obvious degradation and precipitation were observed. (Referring from China Biological Products Standard, which was calculated by the Arrhenius equation.) The loss of this protein is less than 5% within the expiration date under appropriate storage condition.
Storage	Avoid repeated freeze/thaw cycles. Store at 2-8°C for one month. Aliquot and store at -80°C for 12 months.
Storage Buffer	Supplied as lyophilized form in PBS, pH7.4, containing 5% sucrose, 0.01% sarcosyl.
Reconstitution	Reconstitute in sterile PBS, pH7.2-pH7.4.

GENE INFORMATION

Gene Name	Klk7 kallikrein related-peptidase 7 (chymotryptic, stratum corneum) [Mus musculus (house mouse)]
Official Symbol	Klk7
Synonyms	GLP-1R; GLP1Rc; GLP-1 receptor; GLP-1-R; glucagon-like peptide 1 receptor
Gene ID	23993
mRNA Refseq	NM_011872.3
Protein Refseq	NP_036002.1

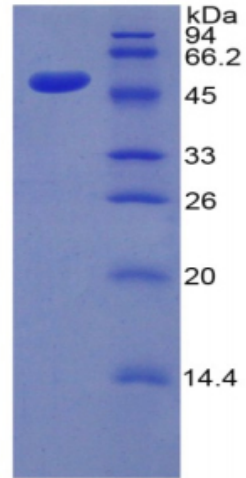
 Tel: 1-631-559-9269 1-516-512-3133

 Email: info@creative-biomart.com  Fax: 1-631-938-8127

 45-1 Ramsey Road, Shirley, NY 11967, USA

UniProt ID

Q91VE3



15% SDS-PAGE

SDS-PAGE

 Tel: 1-631-559-9269 1-516-512-3133

 Email: info@creative-biomart.com  Fax: 1-631-938-8127

 45-1 Ramsey Road, Shirley, NY 11967, USA