

Recombinant Rat Klk7 protein, His & GST-tagged

Cat. No. Klk7-1961R **Lot. No.** (See product label)

SPECIFICATION

Product Overview	Recombinant Rat Klk7 aa. (Arg24~Glu255) fused with N-terminal His & GST tag was produced in E. coli cells.
Species	Rat
Source	E.coli
ProteinLength	Arg24~Glu255
Form	Freeze-dried powder
Molecular Mass	55kDa as determined by SDS-PAGE reducing conditions.
Endotoxin	<1.0EU per 1ug (determined by the LAL method)
Purity	> 92%
Characteristic	The isoelectric point is 6.3.
Applications	SDS-PAGE; WB; ELISA; IP; CoIP; Reporter Assays; Purification; Amine Reactive Labeling.
Stability	The thermal stability is described by the loss rate of the target protein. The loss rate was determined by accelerated thermal degradation test, that is, incubate the protein at 37°C for 48h, and no obvious degradation and precipitation were observed.

 Tel: 1-631-559-9269 1-516-512-3133

 Email: info@creative-biomart.com  Fax: 1-631-938-8127

 45-1 Ramsey Road, Shirley, NY 11967, USA

(Referring from China Biological Products Standard, which was calculated by the Arrhenius equation.) The loss of this protein is less than 5% within the expiration date under appropriate storage condition.

Storage

Avoid repeated freeze/thaw cycles. Store at 2-8°C for one month. Aliquot and store at -80°C for 12 months.

Concentration

200µg/mL

Storage Buffer

PBS, pH7.4, containing 1mM DTT, 5% trehalose, 0.01% sarcosyl and Proclin300

Reconstitution

Reconstitute in PBS (pH7.4) to a concentration of 0.1-1.0 mg/mL. Do not vortex.

GENE INFORMATION

Gene Name

Klk7 kallikrein-related peptidase 7 [*Rattus norvegicus* (Norway rat)]

Official Symbol

Klk7

Synonyms

FES1; HSPA (heat shock 70kDa) binding protein, cytoplasmic cochaperone 1; heat shock protein-binding protein 1; hsp70 interacting protein; hsp70-binding protein 1

Gene ID

292852

mRNA Refseq

NM_001106254.1

Protein Refseq

NP_001099724.1

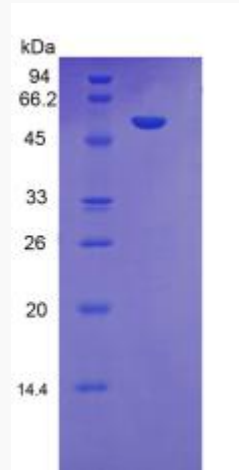
UniProt ID

D3ZZY0

 Tel: 1-631-559-9269 1-516-512-3133

 Email: info@creative-biomart.com  Fax: 1-631-938-8127

 45-1 Ramsey Road, Shirley, NY 11967, USA



SDS-PAGE

Tel: 1-631-559-9269 1-516-512-3133

Email: info@creative-biomart.com Fax: 1-631-938-8127

45-1 Ramsey Road, Shirley, NY 11967, USA