

Recombinant Mouse Klk8 protein, His & GST-tagged

Cat. No. Klk8-798M Lot. No. (See product label)

SPECIFICATION

Product Overview	Recombinant Mouse Klk8 aa. (Ile33~Thr250) fused with N-terminal His & GST tag was produced in E. coli cells.
Species	Mouse
Source	E.coli
ProteinLength	Ile33~Thr250
Description	This gene encodes a member of the kallikrein subfamily of serine proteases that are involved in diverse physiological functions such as skin desquamation, tooth enamel formation, seminal liquefaction, synaptic neural plasticity and brain function. The encoded preproprotein undergoes proteolytic cleavage of the activation peptide to generate the functional enzyme. Mice lacking the encoded protein exhibit impaired long-term potentiation and increased anxiety, as well as a hyperkeratosis phenotype. This gene is located in a cluster of several related kallikrein genes on chromosome 7.
Form	Freeze-dried powder
Molecular Mass	54kDa as determined by SDS-PAGE reducing conditions.
Endotoxin	<1.0EU per 1g (determined by the LAL method)
Purity	>98%

 Tel: 1-631-559-9269 1-516-512-3133

 Email: info@creative-biomart.com  Fax: 1-631-938-8127

 45-1 Ramsey Road, Shirley, NY 11967, USA

Characteristic	The isoelectric point is 6.7.
Applications	SDS-PAGE; WB; ELISA; IP; CoIP; Purification; Amine Reactive Labeling.
Stability	The thermal stability is described by the loss rate. The loss rate was determined by accelerated thermal degradation test, that is, incubate the protein at 37°C for 48h, and no obvious degradation and precipitation were observed. The loss rate is less than 5% within the expiration date under appropriate storage condition.
Storage	Avoid repeated freeze/thaw cycles. Store at 2-8°C for one month. Aliquot and store at -80°C for 12 months.
Concentration	200µg/mL
Storage buffer	PBS, pH7.4, containing 1mM DTT, 5% trehalose, 0.01% sarcosyl and Proclin300.
Reconstitution	Reconstitute in PBS (pH7.4) to a concentration of 0.1-1.0 mg/mL. Do not vortex.

GENE INFORMATION

Gene Name	Klk8 kallikrein related-peptidase 8 [Mus musculus (house mouse)]
Official Symbol	Klk8
Synonyms	NP; BSP1; Nrpn; Prss19; Brain Serine protease 1; protease, serine, 19 (neuropsin); kallikrein-8
Gene ID	259277
mRNA Refseq	NM_001324398.1

 Tel: 1-631-559-9269 1-516-512-3133

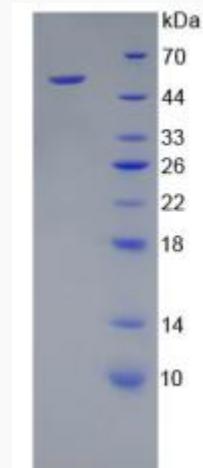
 Email: info@creative-biomart.com  Fax: 1-631-938-8127

 45-1 Ramsey Road, Shirley, NY 11967, USA

Protein Refseq NP_001311327.1

UniProt ID Q61955

SDS-PAGE



 Tel: 1-631-559-9269 1-516-512-3133

 Email: info@creative-biomart.com  Fax: 1-631-938-8127

 45-1 Ramsey Road, Shirley, NY 11967, USA