

## Recombinant Rat Klk9 Protein, His-tagged

**Cat. No.** Klk9-1718R    **Lot. No.** (See product label)

### SPECIFICATION

<b>Product Overview</b>	Recombinant Rat Klk9 Protein (Met1-Thr254) with N-His tag was expressed in E. coli.
<b>Species</b>	Rat
<b>Source</b>	E.coli
<b>ProteinLength</b>	Met1-Thr254
<b>Description</b>	Predicted to enable serine-type endopeptidase activity. Predicted to be involved in proteolysis. Predicted to be active in secretory granule. Orthologous to human KLK9 (kallikrein related peptidase 9).
<b>Form</b>	Freeze-dried powder
<b>Molecular Mass</b>	Predicted Molecular Mass: 31.9 kDa
<b>Purity</b>	> 97%
<b>Applications</b>	Positive Control; Immunogen; SDS-PAGE; WB.
<b>Stability</b>	The thermal stability is described by the loss rate. The loss rate was determined by accelerated thermal degradation test, that is, incubate the protein at 37 centigrade for 48h, and no obvious degradation and precipitation were observed. The loss rate is less than 5% within the expiration date under appropriate storage condition.

 Tel: 1-631-559-9269    1-516-512-3133

 Email: [info@creative-biomart.com](mailto:info@creative-biomart.com)     Fax: 1-631-938-8127

 45-1 Ramsey Road, Shirley, NY 11967, USA

<b>Storage</b>	Avoid repeated freeze/thaw cycles. Store at 2-8 centigrade for one month. Aliquot and store at -80 centigrade for 12 months.
<b>Storage Buffer</b>	PBS, pH7.4, containing 0.01% SKL, 1mM DTT, 5% Trehalose and Proclin300.
<b>Reconstitution</b>	Reconstitute in PBS or others.

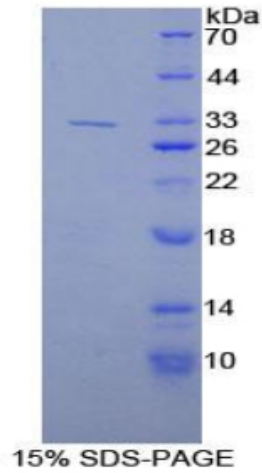
## GENE INFORMATION

<b>Gene Name</b>	Klk9 kallikrein related-peptidase 9 [ Rattus norvegicus (Norway rat) ]
<b>Official Symbol</b>	Klk9
<b>Synonyms</b>	KLK9; kallikrein related-peptidase 9; kallikrein-9; kallikrein 9;
<b>Gene ID</b>	292851
<b>mRNA Refseq</b>	NM_001106253
<b>Protein Refseq</b>	NP_001099723
<b>UniProt ID</b>	G3V934

 Tel: 1-631-559-9269 1-516-512-3133

 Email: [info@creative-biomart.com](mailto:info@creative-biomart.com)  Fax: 1-631-938-8127

 45-1 Ramsey Road, Shirley, NY 11967, USA



Tel: 1-631-559-9269 1-516-512-3133

Email: [info@creative-biomart.com](mailto:info@creative-biomart.com) Fax: 1-631-938-8127

45-1 Ramsey Road, Shirley, NY 11967, USA