

## Recombinant Mouse Klrg1 protein(57-188aa), His&Myc-tagged

Cat. No. Klrg1-3322M Lot. No. (See product label)

### SPECIFICATION

<b>Product Overview</b>	Recombinant Mouse Klrg1 protein(O88713)(57-188aa), fused with N-terminal His and C-terminal Myc tag, was expressed in E. coli.
<b>Species</b>	Mouse
<b>Source</b>	E.coli
<b>ProteinLength</b>	57-188aa
<b>Form</b>	If the delivery form is liquid, the default storage buffer is Tris/PBS-based buffer, 5%-50% glycerol. If the delivery form is lyophilized powder, the buffer before lyophilization is Tris/PBS-based buffer, 6% Trehalose, pH 8.0.
<b>Molecular Mass</b>	22.4 kDa
<b>Purity</b>	Greater than 85% as determined by SDS-PAGE.
<b>Storage</b>	Store at -20°C/-80°C upon receipt, aliquoting is necessary for mutiple use. Avoid repeated freeze-thaw cycles.
<b>Reconstitution</b>	We recommend that this vial be briefly centrifuged prior to opening to bring the contents to the bottom. Please reconstitute protein in deionized sterile water to a concentration of 0.1-1.0 mg/mL. We recommend to add 5-50% of glycerol (final concentration) and aliquot for long-term storage at -20°C/-80°C.

 Tel: 1-631-559-9269 1-516-512-3133

 Email: [info@creative-biomart.com](mailto:info@creative-biomart.com)  Fax: 1-631-938-8127

 45-1 Ramsey Road, Shirley, NY 11967, USA



**AA Sequence** QRILCCGSKDSTCSHCPSPILWTRNGSHCYFYSMEKKDWNSLKFACADKGSLLT  
FPDNQGVKLFGEYLGQDFYWIGLRNIDGWRWEGGPALSLRILTNSLIQRRCGAIHRNG  
LQASSCEVALQWICKKVLY

## GENE INFORMATION

**Gene Name** [Klrg1 killer cell lectin-like receptor subfamily G, member 1 \[ Mus musculus \]](#)

**Official Symbol** [Klrg1](#)

**Synonyms** KLRG1; killer cell lectin-like receptor subfamily G, member 1; killer cell lectin-like receptor subfamily G member 1; mast cell function-associated antigen 2F1; MAFA; 2F1-Ag; MAFA-L; MGC123930;

**Gene ID** [50928](#)

**mRNA Refseq** [NM\\_016970](#)

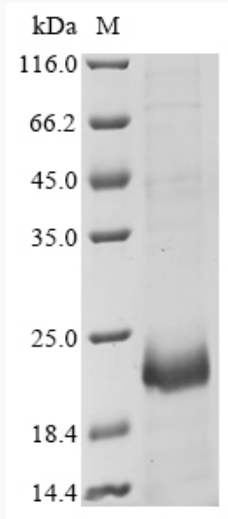
**Protein Refseq** [NP\\_058666](#)

Tel: 1-631-559-9269 1-516-512-3133

Email: [info@creative-biomart.com](mailto:info@creative-biomart.com) Fax: 1-631-938-8127

45-1 Ramsey Road, Shirley, NY 11967, USA

**SDS-PAGE**



 Tel: 1-631-559-9269 1-516-512-3133

 Email: [info@creative-biomart.com](mailto:info@creative-biomart.com)  Fax: 1-631-938-8127

 45-1 Ramsey Road, Shirley, NY 11967, USA