

Recombinant Mouse Klrg1 protein, hFc-tagged

Cat. No. Klrg1-784M Lot. No. (See product label)

SPECIFICATION

Product Overview	Recombinant Mouse Klrg1 protein(O88713)(Gln57-Tyr188), fused with N-terminal hFc tag, was expressed in HEK293.
Species	Mouse
Source	HEK293
ProteinLength	Gln57-Tyr188
Tag	N-hFc
Form	Supplied as 0.22µm filtered solution in PBS (pH 7.4).
Molecular Mass	The protein has a predicted MW of 42.3 kDa. Due to glycosylation, the protein migrates to 43-50 kDa based on Tris-Bis PAGE result.
Endotoxin	Less than 1EU per µg by the LAL method.
Purity	> 95% as determined by Tris-Bis PAGE;> 95% as determined by HPLC
Storage	Valid for 12 months from date of receipt when stored at -80°C. Recommend to aliquot the protein into smaller quantities for optimal storage. Please do not repeated freeze-thaw cycles.
Reconstitution	It is recommended that sterile water be added to the vial to prepare a stock solution of

 Tel: 1-631-559-9269 1-516-512-3133

 Email: info@creative-biomart.com  Fax: 1-631-938-8127

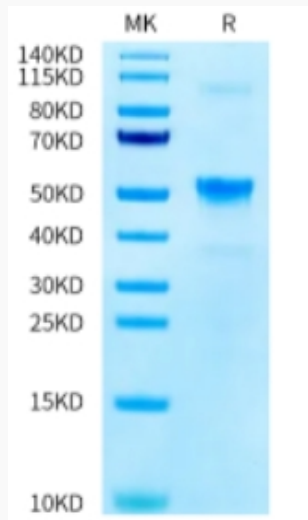
 45-1 Ramsey Road, Shirley, NY 11967, USA

0.2 ug/ul. Centrifuge the vial at 4°C before opening to recover the entire contents.

GENE INFORMATION

Gene Name	Klrg1 killer cell lectin-like receptor subfamily G, member 1 [<i>Mus musculus</i>]
Official Symbol	Klrg1
Synonyms	KLRG1; killer cell lectin-like receptor subfamily G, member 1; killer cell lectin-like receptor subfamily G member 1; mast cell function-associated antigen 2F1; MAFA; 2F1-Ag; MAFA-L; MGC123930;
Gene ID	50928
mRNA Refseq	NM_016970
Protein Refseq	NP_058666

Tris-Bis PAGE



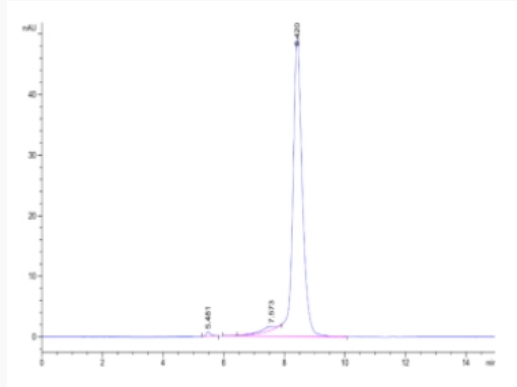
Tel: 1-631-559-9269 1-516-512-3133

Email: info@creative-biomart.com Fax: 1-631-938-8127

45-1 Ramsey Road, Shirley, NY 11967, USA



SEC-HPLC



Tel: 1-631-559-9269 1-516-512-3133

Email: info@creative-biomart.com Fax: 1-631-938-8127

45-1 Ramsey Road, Shirley, NY 11967, USA