

Recombinant Rat Klrk1 protein, His & T7-tagged

Cat. No. Klrk1-1770R Lot. No. (See product label)

SPECIFICATION

Product Overview	Recombinant Rat Klrk1 aa. (Ala75~Val215 (Accession # O70215)) fused with N-terminal His & T7 tag was produced in E. coli cells.
Species	Rat
Source	E.coli
ProteinLength	Ala75~Val215
Description	Functions as a natural cytotoxicity receptor to stimulate perforin-mediated elimination of ligand-expressing tumor cells.
Form	Freeze-dried powder
Molecular Mass	Predicted Molecular Mass: 19.6kDa.
Endotoxin	<1.0EU per 1ug (determined by the LAL method)
Purity	>90%
Characteristic	The isoelectric point is 6.9.
Applications	SDS-PAGE; WB; ELISA; IP.
Stability	The thermal stability is described by the loss rate of the target protein. The loss rate

 Tel: 1-631-559-9269 1-516-512-3133

 Email: info@creative-biomart.com  Fax: 1-631-938-8127

 45-1 Ramsey Road, Shirley, NY 11967, USA

was determined by accelerated thermal degradation test, that is, incubate the protein at 37°C for 48h, and no obvious degradation and precipitation were observed. (Referring from China Biological Products Standard, which was calculated by the Arrhenius equation.) The loss of this protein is less than 5% within the expiration date under appropriate storage condition.

Storage	Avoid repeated freeze/thaw cycles. Store at 2-8°C for one month. Aliquot and store at -80°C for 12 months.
Storage Buffer	Supplied as lyophilized form in 20mM Tris, 150mM NaCl, pH8.0, containing 1mM EDTA, 1mM DTT, 0.01% sarcosyl, 5% trehalose, and preservative.
Reconstitution	Reconstitute in sterile ddH ₂ O.

GENE INFORMATION

Gene Name	Klrk1 killer cell lectin like receptor K1 [Rattus norvegicus (Norway rat)]
Official Symbol	Klrk1
Synonyms	LRP5; LDL receptor related protein 5; HBM; LR3; OPS; EVR1; EVR4; LRP7; OPPG; BMND1; LRP-5; OPTA1; VBCH2; low-density lipoprotein receptor-related protein 5; low density lipoprotein receptor-related protein 5; low density lipoprotein receptor-related protein 7
Gene ID	24934
mRNA Refseq	NM_133512.2
Protein Refseq	NP_598196.1

 Tel: 1-631-559-9269 1-516-512-3133

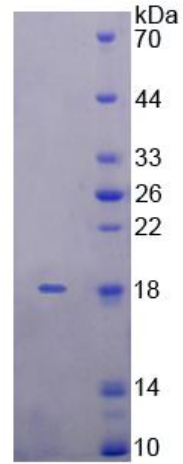
 Email: info@creative-biomart.com  Fax: 1-631-938-8127

 45-1 Ramsey Road, Shirley, NY 11967, USA



UniProt ID

O70215



15% SDS-PAGE

SDS-PAGE

Tel: 1-631-559-9269 1-516-512-3133

Email: info@creative-biomart.com Fax: 1-631-938-8127

45-1 Ramsey Road, Shirley, NY 11967, USA