

Recombinant Mouse Klrk1 protein, hFc-tagged

Cat. No. Klrk1-4543M **Lot. No.** (See product label)

SPECIFICATION

| | |
|-------------------------|--|
| Product Overview | Recombinant Mouse Klrk1 protein(O54709-1)(Phe90-Val232), fused with N-terminal hFc tag, was expressed in HEK293. |
| Species | Mouse |
| Source | HEK293 |
| ProteinLength | Phe90-Val232 |
| Tag | N-hFc |
| Form | Lyophilized from 0.22µm filtered solution in 20mM Tris, 250mM NaCl (pH 8.0). Normally 8% trehalose is added as protectant before lyophilization. |
| Molecular Mass | The protein has a predicted MW of 43.7 kDa. Due to glycosylation, the protein migrates to 50-68 kDa based on Tris-Bis PAGE result. |
| Endotoxin | Less than 1EU per µg by the LAL method. |
| Purity | > 95% as determined by Tris-Bis PAGE;> 95% as determined by HPLC |
| Storage | Reconstituted protein stable at -80°C for 12 months, 4°C for 1 week. Use a manual defrost freezer and avoid repeated freeze-thaw cycles. |
| Reconstitution | Centrifuge tubes before opening. Reconstituting to a concentration more than 100 |

 Tel: 1-631-559-9269 1-516-512-3133

 Email: info@creative-biomart.com  Fax: 1-631-938-8127

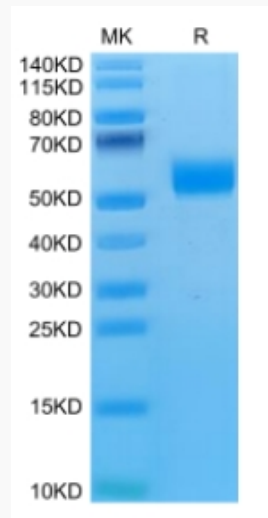
 45-1 Ramsey Road, Shirley, NY 11967, USA

µg/ml is recommended. Dissolve the lyophilized protein in distilled water.

GENE INFORMATION

| | |
|------------------------|---|
| Gene Name | Klrk1 killer cell lectin-like receptor subfamily K, member 1 [<i>Mus musculus</i>] |
| Official Symbol | Klrk1 |
| Synonyms | KLRK1; killer cell lectin-like receptor subfamily K, member 1; NKG2-D type II integral membrane protein; NK cell receptor D; natural killer cell group 2D; NKG2-D-activating NK receptor; Nkg2d; NKG2-D; D6H12S2489E; |
| Gene ID | 27007 |
| mRNA Refseq | NM_001083322 |
| Protein Refseq | NP_001076791 |

Tris-Bis PAGE



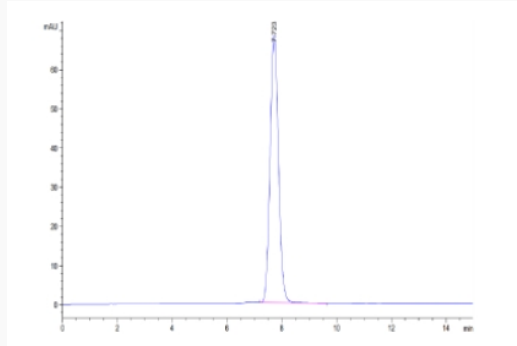
Tel: 1-631-559-9269 1-516-512-3133

Email: info@creative-biomart.com Fax: 1-631-938-8127

45-1 Ramsey Road, Shirley, NY 11967, USA



SEC-HPLC



Tel: 1-631-559-9269 1-516-512-3133

Email: info@creative-biomart.com Fax: 1-631-938-8127

45-1 Ramsey Road, Shirley, NY 11967, USA