

## Recombinant Mouse Klrk1 protein, His-tagged

**Cat. No.** Klrk1-5643M    **Lot. No.** (See product label)

### SPECIFICATION

|                         |   |
|-------------------------|---|
| <b>Product Overview</b> | Recombinant Mouse Klrk1 protein(O54709-1)(Phe90-Val232), fused with N-terminal His tag, was expressed in HEK293.  |
| <b>Species</b>          | Mouse   |
| <b>Source</b>           | HEK293  |
| <b>ProteinLength</b>    | Phe90-Val232  |
| <b>Tag</b>              | N-His   |
| <b>Form</b>             | Lyophilized from 0.22µm filtered solution in 20mM Tris, 250mM NaCl (pH 8.0). Normally 8% trehalose is added as protectant before lyophilization.                  |
| <b>Bio-activity</b>     | Immobilized Mouse NKG2D, His Tag at 5ug/ml (100ul/well) on the plate. Dose response curve for Human MICA, hFc Tag with the EC50 of 71.3ng/ml determined by ELISA. |
| <b>Molecular Mass</b>   | The protein has a predicted MW of 17.5 kDa. Due to glycosylation, the protein migrates to 24-35kDa based on Tris-Bis PAGE result.                                 |
| <b>Endotoxin</b>        | Less than 1EU per µg by the LAL method.   |
| <b>Purity</b>           | > 95% as determined by Tris-Bis PAGE;> 95% as determined by HPLC  |

 Tel: 1-631-559-9269    1-516-512-3133

 Email: [info@creative-biomart.com](mailto:info@creative-biomart.com)     Fax: 1-631-938-8127

 45-1 Ramsey Road, Shirley, NY 11967, USA

**Storage** Reconstituted protein stable at -80°C for 12 months, 4°C for 1 week. Use a manual defrost freezer and avoid repeated freeze-thaw cycles.

**Reconstitution** Centrifuge tubes before opening. Reconstituting to a concentration more than 100 µg/ml is recommended. Dissolve the lyophilized protein in distilled water.

## GENE INFORMATION

**Gene Name** [Klrk1 killer cell lectin-like receptor subfamily K, member 1 \[ Mus musculus \]](#)

**Official Symbol** [Klrk1](#)

**Synonyms** KLRK1; killer cell lectin-like receptor subfamily K, member 1; NKG2-D type II integral membrane protein; NK cell receptor D; natural killer cell group 2D; NKG2-D-activating NK receptor; Nkg2d; NKG2-D; D6H12S2489E;

**Gene ID** [27007](#)

**mRNA Refseq** [NM\\_001083322](#)

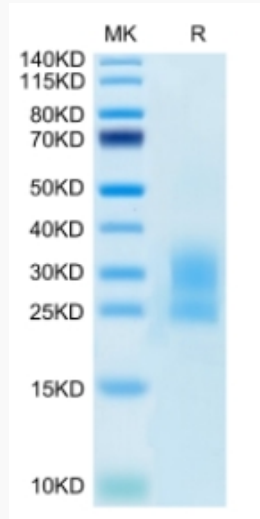
**Protein Refseq** [NP\\_001076791](#)

 Tel: 1-631-559-9269 1-516-512-3133

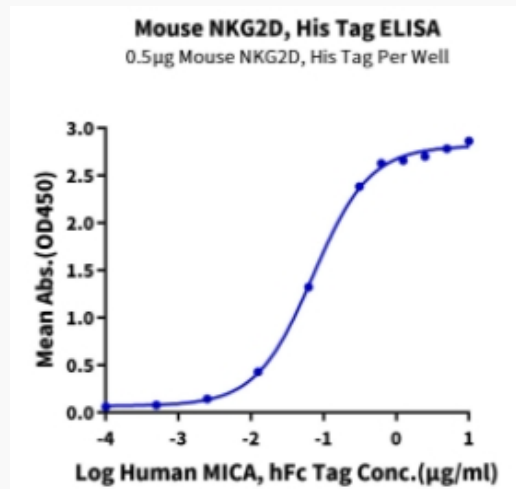
 Email: [info@creative-biomart.com](mailto:info@creative-biomart.com)  Fax: 1-631-938-8127

 45-1 Ramsey Road, Shirley, NY 11967, USA

**Tris-Bis PAGE**



**ELISA Data**



 Tel: 1-631-559-9269 1-516-512-3133

 Email: [info@creative-biomart.com](mailto:info@creative-biomart.com)  Fax: 1-631-938-8127

 45-1 Ramsey Road, Shirley, NY 11967, USA