

Recombinant Rat Kng1 protein, His & GST-tagged

Cat. No. Kng1-1819R Lot. No. (See product label)

SPECIFICATION

Product Overview	Recombinant Rat Kng1 aa. (Leu214~Asp475) fused with N-terminal His & GST tag was produced in E. coli cells.
Species	Rat
Source	E.coli
ProteinLength	Leu214~Asp475
Form	Freeze-dried powder
Molecular Mass	59kDa as determined by SDS-PAGE reducing conditions.
Endotoxin	<1.0EU per 1ug (determined by the LAL method)
Purity	>95%
Characteristic	The isoelectric point is 6.5.
Applications	SDS-PAGE; WB; ELISA; IP; CoIP; Reporter Assays; Purification; Amine Reactive Labeling.
Stability	The thermal stability is described by the loss rate of the target protein. The loss rate was determined by accelerated thermal degradation test, that is, incubate the protein at 37°C for 48h, and no obvious degradation and precipitation were observed.

 Tel: 1-631-559-9269 1-516-512-3133

 Email: info@creative-biomart.com  Fax: 1-631-938-8127

 45-1 Ramsey Road, Shirley, NY 11967, USA

(Referring from China Biological Products Standard, which was calculated by the Arrhenius equation.) The loss of this protein is less than 5% within the expiration date under appropriate storage condition.

Storage

Avoid repeated freeze/thaw cycles. Store at 2-8°C for one month. Aliquot and store at -80°C for 12 months.

Concentration

200µg/mL

Storage Buffer

20mM Tris, 150mM NaCl, pH8.0, containing 1mM EDTA, 1mM DTT, 0.01% sarcosyl, 5% Trehalose and Proclin300.

Reconstitution

Reconstitute in 20mM Tris, 150mM NaCl (pH8.0) to a concentration of 0.1-1.0mg/mL. Do not vortex.

GENE INFORMATION

Gene Name

[Kng1 kininogen 1 \[Rattus norvegicus \(Norway rat\) \]](#)

Official Symbol

[Kng1](#)

Synonyms

Ganab; alpha glucosidase 2 alpha neutral subunit; G2an; Glull; AU042638; mKIAA0088; neutral alpha-glucosidase AB; alpha-glucosidase 2; carbohydrate processing enzyme of the endoplasmic reticulum; glucosidase II alpha-subunit; glucosidase II subunit alpha

Gene ID

[288001](#)

mRNA Refseq

[NM_001009628.1](#)

Protein Refseq

[NP_001009628.1](#)

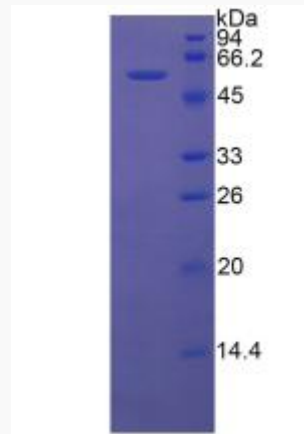
 Tel: 1-631-559-9269 1-516-512-3133

 Email: info@creative-biomart.com  Fax: 1-631-938-8127


 45-1 Ramsey Road, Shirley, NY 11967, USA

UniProt ID


P08932



SDS-PAGE

 Tel: 1-631-559-9269 1-516-512-3133

 Email: info@creative-biomart.com  Fax: 1-631-938-8127

 45-1 Ramsey Road, Shirley, NY 11967, USA