

Recombinant Rat Kng2 protein, His-tagged

Cat. No. Kng2-1791R **Lot. No.** (See product label)

SPECIFICATION

Product Overview	Recombinant Rat Kng2 aa. (Val367~Ser430 (Accession # P01048)) fused with N-terminal His tag was produced in E. coli cells.
Species	Rat
Source	E.coli
ProteinLength	Val367~Ser430
Form	Freeze-dried powder
Molecular Mass	Predicted Molecular Mass: 8.6kDa
Endotoxin	<1.0EU per 1ug (determined by the LAL method)
Purity	>95%
Applications	SDS-PAGE; WB; ELISA; IP.
Stability	The thermal stability is described by the loss rate. The loss rate was determined by accelerated thermal degradation test, that is, incubate the protein at 37°C for 48h, and no obvious degradation and precipitation were observed. The loss rate is less than 5% within the expiration date under appropriate storage condition.
Storage	Avoid repeated freeze/thaw cycles. Store at 2-8°C for one month. Aliquot and store at

 Tel: 1-631-559-9269 1-516-512-3133

 Email: info@creative-biomart.com  Fax: 1-631-938-8127

 45-1 Ramsey Road, Shirley, NY 11967, USA

-80°C for 12 months.

Storage buffer Supplied as lyophilized form in PBS, pH7.4, containing 5% trehalose, 0.01% sarcosyl.

Reconstitution Reconstitute in sterile PBS, pH7.2-pH7.4.

Isoelectric Point 9.3

GENE INFORMATION

Gene Name [Kng2 kininogen 2 \[Rattus norvegicus \(Norway rat\) \]](#)

Official Symbol [Kng2](#)

Synonyms Kng2; kininogen 2; Kng; Tkg; Kng1; Kngk; Kngt; Map1; TKG6; KINKG; KINKH; Kngt1; KINT1G; Kng_v1; Kng1_v1; T-kininogen 1; K-kininogen, differential splicing leads to HMW Kngk; LMW T-kininogen I; T-kininogen I; alpha-1-MAP; kininogen 1, variant 1; kininogen II; major acute phase protein; thiostatin

Gene ID [24903](#)

mRNA Refseq [NM_012696.2](#)

Protein Refseq [NP_036828.2](#)

UniProt ID [P01048](#)

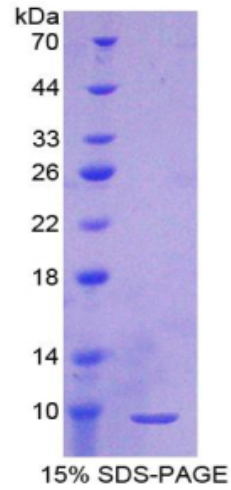
 Tel: 1-631-559-9269 1-516-512-3133

 Email: info@creative-biomart.com  Fax: 1-631-938-8127

 45-1 Ramsey Road, Shirley, NY 11967, USA



SDS-PAGE



Tel: 1-631-559-9269 1-516-512-3133

Email: info@creative-biomart.com Fax: 1-631-938-8127

45-1 Ramsey Road, Shirley, NY 11967, USA