

## Recombinant Rat Kng2 protein, His & GST-tagged

**Cat. No.** Kng2-1792R    **Lot. No.** (See product label)

### SPECIFICATION

|                         |   |
|-------------------------|---|
| <b>Product Overview</b> | Recombinant Rat Kng2 aa. (Val367~Ser430 (Accession # P01048)) fused with N-terminal His & GST tag was produced in E. coli cells.  |
| <b>Species</b>          | Rat   |
| <b>Source</b>           | E.coli  |
| <b>ProteinLength</b>    | Val367~Ser430   |
| <b>Form</b>             | Freeze-dried powder   |
| <b>Molecular Mass</b>   | Predicted Molecular Mass: 39.1kDa   |
| <b>Endotoxin</b>        | <1.0EU per 1ug (determined by the LAL method)   |
| <b>Purity</b>           | >95%  |
| <b>Applications</b>     | SDS-PAGE; WB; ELISA; IP.  |
| <b>Stability</b>        | The thermal stability is described by the loss rate. The loss rate was determined by accelerated thermal degradation test, that is, incubate the protein at 37°C for 48h, and no obvious degradation and precipitation were observed. The loss rate is less than 5% within the expiration date under appropriate storage condition. |
| <b>Storage</b>          | Avoid repeated freeze/thaw cycles. Store at 2-8°C for one month. Aliquot and store at   |

 Tel: 1-631-559-9269    1-516-512-3133

 Email: [info@creative-biomart.com](mailto:info@creative-biomart.com)     Fax: 1-631-938-8127

 45-1 Ramsey Road, Shirley, NY 11967, USA

-80°C for 12 months.

**Storage buffer** Supplied as lyophilized form in PBS, pH7.4, containing 5% trehalose, 0.01% sarcosyl.

**Reconstitution** Reconstitute in sterile PBS, pH7.2-pH7.4.

**Isoelectric Point** 9.3

## GENE INFORMATION

**Gene Name** [Kng2 kininogen 2 \[ Rattus norvegicus \(Norway rat\) \]](#)

**Official Symbol** [Kng2](#)

**Synonyms** Kng2; kininogen 2; Kng; Tkg; Kng1; Kngk; Kngt; Map1; TKG6; KINKG; KINKH; Kngt1; KINT1G; Kng\_v1; Kng1\_v1; T-kininogen 1; K-kininogen, differential splicing leads to HMW Kngk; LMW T-kininogen I; T-kininogen I; alpha-1-MAP; kininogen 1, variant 1; kininogen II; major acute phase protein; thiostatin

**Gene ID** [24903](#)

**mRNA Refseq** [NM\\_012696.2](#)

**Protein Refseq** [NP\\_036828.2](#)

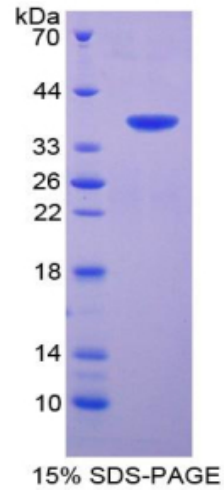
**UniProt ID** [P01048](#)

 Tel: 1-631-559-9269 1-516-512-3133

 Email: [info@creative-biomart.com](mailto:info@creative-biomart.com)  Fax: 1-631-938-8127

 45-1 Ramsey Road, Shirley, NY 11967, USA

**SDS-PAGE**



 Tel: 1-631-559-9269 1-516-512-3133

 Email: [info@creative-biomart.com](mailto:info@creative-biomart.com)  Fax: 1-631-938-8127

 45-1 Ramsey Road, Shirley, NY 11967, USA