

Recombinant Mouse Krt1 protein, His-tagged

Cat. No. Krt1-2701M Lot. No. (See product label)

SPECIFICATION

Product Overview	Recombinant Mouse Krt1 aa. (Arg189~Glu497 (Accession # P04104)) fused with N-terminal His tag was produced in E. coli cells.
Species	Mouse
Source	E.coli
ProteinLength	Arg189~Glu497
Form	Freeze-dried powder
Molecular Mass	Predicted Molecular Mass: 37.7kDa
Endotoxin	<1.0EU per 1g (determined by the LAL method)
Purity	>90%
Characteristic	The isoelectric point is 5.1.
Applications	SDS-PAGE; WB; ELISA; IP.
Stability	The thermal stability is described by the loss rate. The loss rate was determined by accelerated thermal degradation test, that is, incubate the protein at 37°C for 48h, and no obvious degradation and precipitation were observed. The loss rate is less than 5% within the expiration date under appropriate storage condition.

 Tel: 1-631-559-9269 1-516-512-3133

 Email: info@creative-biomart.com  Fax: 1-631-938-8127

 45-1 Ramsey Road, Shirley, NY 11967, USA

Storage	Avoid repeated freeze/thaw cycles. Store at 2-8°C for one month. Aliquot and store at -80°C for 12 months.
----------------	--

Storage buffer	Supplied as lyophilized form in PBS, pH7.4, containing 1mM DTT, 5% trehalose, 0.05% sarcosyl and preservative.
-----------------------	--

Reconstitution	Reconstitute in sterile PBS, pH7.2-pH7.4.
-----------------------	---

GENE INFORMATION

Gene Name	Krt1 keratin 1 [Mus musculus (house mouse)]
------------------	---

Official Symbol	Krt1
------------------------	----------------------

Synonyms	Krt86; Krt2-1; Krt-2.1; 67 kDa cytokeratin; CK-1; K1; cytokeratin-1; keratin 86; keratin complex 2, basic, gene 1; type-II keratin Kb1; keratin, type II cytoskeletal 1
-----------------	---

Gene ID	16678
----------------	-----------------------

mRNA Refseq	NM_008473.2
--------------------	-----------------------------

Protein Refseq	NP_032499.2
-----------------------	-----------------------------

UniProt ID	P04104
-------------------	------------------------

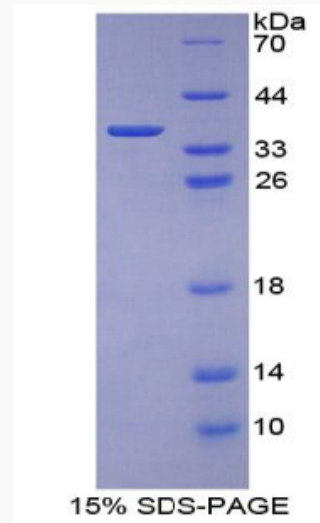
 Tel: 1-631-559-9269 1-516-512-3133

 Email: info@creative-biomart.com  Fax: 1-631-938-8127

 45-1 Ramsey Road, Shirley, NY 11967, USA



SDS-PAGE



Tel: 1-631-559-9269 1-516-512-3133

Email: info@creative-biomart.com Fax: 1-631-938-8127

45-1 Ramsey Road, Shirley, NY 11967, USA