

Recombinant Rat Krt1 protein, His & S-tagged

Cat. No. Krt1-2702R Lot. No. (See product label)

SPECIFICATION

Product Overview	Recombinant Rat Krt1 aa. (Ile350~Glu488 (Accession # Q6IMF3)) fused with N-terminal His & S tag was produced in E. coli cells.
Species	Rat
Source	E.coli
ProteinLength	Ile350~Glu488
Form	Freeze-dried powder
Molecular Mass	26kDa as determined by SDS-PAGE reducing conditions.
Endotoxin	<1.0EU per 1g (determined by the LAL method)
Purity	>96%
Characteristic	The isoelectric point is 5.4.
Applications	SDS-PAGE; WB; ELISA; IP.
Stability	The thermal stability is described by the loss rate. The loss rate was determined by accelerated thermal degradation test, that is, incubate the protein at 37°C for 48h, and no obvious degradation and precipitation were observed. The loss rate is less than 5% within the expiration date under appropriate storage condition.

 Tel: 1-631-559-9269 1-516-512-3133

 Email: info@creative-biomart.com  Fax: 1-631-938-8127

 45-1 Ramsey Road, Shirley, NY 11967, USA

Storage	Avoid repeated freeze/thaw cycles. Store at 2-8°C for one month. Aliquot and store at -80°C for 12 months.
----------------	--

Storage buffer	Supplied as lyophilized form in 20mM Tris, 150mM NaCl, pH8.0, containing 1mM EDTA, 1mM DTT, 0.01% sarcosyl, 5% trehalose, and preservative.
-----------------------	---

Reconstitution	Reconstitute in sterile ddH ₂ O.
-----------------------	---

GENE INFORMATION

Gene Name	Krt1 keratin 1 [Rattus norvegicus (Norway rat)]
------------------	---

Official Symbol	Krt1
------------------------	----------------------

Synonyms	Kb1; CK-1; K1; cytokeratin-1; keratin 1, type II; type-II keratin Kb1; keratin, type II cytoskeletal 1
-----------------	--

Gene ID	300250
----------------	------------------------

mRNA Refseq	NM_001008802.2
--------------------	--------------------------------

Protein Refseq	NP_001008802.2
-----------------------	--------------------------------

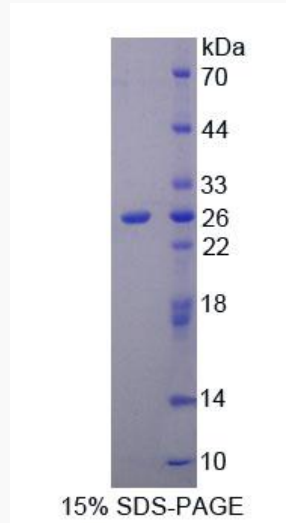
UniProt ID	Q6IMF3
-------------------	------------------------

 Tel: 1-631-559-9269 1-516-512-3133

 Email: info@creative-biomart.com  Fax: 1-631-938-8127

 45-1 Ramsey Road, Shirley, NY 11967, USA

SDS-PAGE



 Tel: 1-631-559-9269 1-516-512-3133

 Email: info@creative-biomart.com  Fax: 1-631-938-8127

 45-1 Ramsey Road, Shirley, NY 11967, USA