

Recombinant Rat Krt1 protein, His-tagged

Cat. No. Krt1-2703R **Lot. No.** (See product label)

SPECIFICATION

Product Overview	Recombinant Rat Krt1 aa. (Glu489~Asn625 (Accession # Q6IMF3)) fused with N-terminal His tag was produced in E. coli cells.
Species	Rat
Source	E.coli
ProteinLength	Glu489~Asn625
Form	Freeze-dried powder
Molecular Mass	Predicted Molecular Mass: 13.5kDa
Endotoxin	<1.0EU per 1g (determined by the LAL method)
Purity	>95%
Characteristic	The isoelectric point is 9.8.
Applications	SDS-PAGE; WB; ELISA; IP
Stability	The thermal stability is described by the loss rate. The loss rate was determined by accelerated thermal degradation test, that is, incubate the protein at 37°C for 48h, and no obvious degradation and precipitation were observed. The loss rate is less than 5% within the expiration date under appropriate storage condition.

 Tel: 1-631-559-9269 1-516-512-3133

 Email: info@creative-biomart.com  Fax: 1-631-938-8127

 45-1 Ramsey Road, Shirley, NY 11967, USA

Storage	Avoid repeated freeze/thaw cycles. Store at 2-8°C for one month. Aliquot and store at -80°C for 12 months.
Storage buffer	Supplied as lyophilized form in PBS, pH7.4, containing 5% trehalose, 0.01% sarcosyl.
Reconstitution	Reconstitute in sterile PBS, pH7.2-pH7.4.

GENE INFORMATION

Gene Name	Krt1 keratin 1 [<i>Rattus norvegicus</i> (Norway rat)]
Official Symbol	Krt1
Synonyms	Kb1; CK-1; K1; cytokeratin-1; keratin 1, type II; type-II keratin Kb1; keratin, type II cytoskeletal 1
Gene ID	300250
mRNA Refseq	NM_001008802.2
Protein Refseq	NP_001008802.2
UniProt ID	Q6IMF3

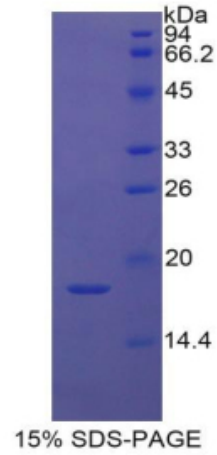
 Tel: 1-631-559-9269 1-516-512-3133

 Email: info@creative-biomart.com  Fax: 1-631-938-8127

 45-1 Ramsey Road, Shirley, NY 11967, USA



SDS-PAGE



Tel: 1-631-559-9269 1-516-512-3133

Email: info@creative-biomart.com Fax: 1-631-938-8127

45-1 Ramsey Road, Shirley, NY 11967, USA