

## Recombinant Rat Krt12 protein, His-tagged

Cat. No. Krt12-2758R    Lot. No. (See product label)

### SPECIFICATION

<b>Product Overview</b>	Recombinant Rat Krt12 aa. (Asp398~Met456) fused with N-terminal His tag was produced in E. coli cells.
<b>Species</b>	Rat
<b>Source</b>	E.coli
<b>ProteinLength</b>	Asp398~Met456
<b>Form</b>	Freeze-dried powder
<b>Molecular Mass</b>	19kDa as determined by SDS-PAGE reducing conditions.
<b>Endotoxin</b>	<1.0EU per 1g (determined by the LAL method)
<b>Purity</b>	>92%
<b>Characteristic</b>	The isoelectric point is 4.9.
<b>Applications</b>	SDS-PAGE; WB; ELISA; IP; CoIP; Purification; Amine Reactive Labeling.
<b>Stability</b>	The thermal stability is described by the loss rate. The loss rate was determined by accelerated thermal degradation test, that is, incubate the protein at 37°C for 48h, and no obvious degradation and precipitation were observed. The loss rate is less than 5% within the expiration date under appropriate storage condition.

 Tel: 1-631-559-9269    1-516-512-3133

 Email: [info@creative-biomart.com](mailto:info@creative-biomart.com)     Fax: 1-631-938-8127

 45-1 Ramsey Road, Shirley, NY 11967, USA

<b>Storage</b>	Avoid repeated freeze/thaw cycles. Store at 2-8°C for one month. Aliquot and store at -80°C for 12 months.
<b>Concentration</b>	200µg/mL
<b>Storage buffer</b>	PBS, pH7.4, containing 1mM DTT, 5% trehalose, 0.01% sarcosyl and Proclin300.
<b>Reconstitution</b>	Reconstitute in PBS (pH7.4) to a concentration of 0.1-1.0 mg/mL. Do not vortex

## GENE INFORMATION

<b>Gene Name</b>	<a href="#">Krt12 keratin 12 [ Rattus norvegicus (Norway rat) ]</a>
<b>Official Symbol</b>	<a href="#">Krt12</a>
<b>Synonyms</b>	Ka12; Krt1-12; CK-12; K12; cytokeratin-12; keratin 12 (Meesmann corneal dystrophy); keratin 12, type I; keratin K12; keratin complex 1, acidic, gene 12; type I keratin KA12; keratin, type I cytoskeletal 12
<b>Gene ID</b>	<a href="#">360625</a>
<b>mRNA Refseq</b>	<a href="#">NM_001008761.1</a>
<b>Protein Refseq</b>	<a href="#">NP_001008761.1</a>
<b>UniProt ID</b>	<a href="#">Q6IFW5</a>

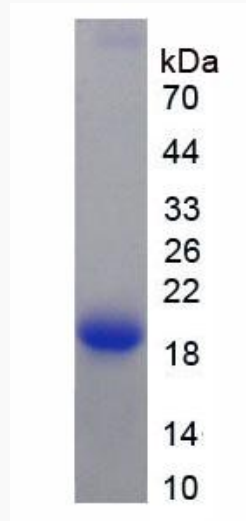
 Tel: 1-631-559-9269 1-516-512-3133

 Email: [info@creative-biomart.com](mailto:info@creative-biomart.com)  Fax: 1-631-938-8127

 45-1 Ramsey Road, Shirley, NY 11967, USA



SDS-PAGE



Tel: 1-631-559-9269 1-516-512-3133

Email: [info@creative-biomart.com](mailto:info@creative-biomart.com) Fax: 1-631-938-8127

45-1 Ramsey Road, Shirley, NY 11967, USA