

Recombinant Rat Krt13 protein, His & T7-tagged

Cat. No. Krt13-1917R **Lot. No.** (See product label)

SPECIFICATION

Product Overview	Recombinant Rat Krt13 aa. (Leu266~Gln404 (Accession # Q61FV4)) fused with N-terminal His & T7 tag was produced in E. coli cells.
Species	Rat
Source	E.coli
ProteinLength	Leu266~Gln404
Description	Human homolog plays a role in epidermal development.
Form	Freeze-dried powder
Molecular Mass	Predicted Molecular Mass: 19.8kDa.
Endotoxin	<1.0EU per 1ug (determined by the LAL method)
Purity	>95%
Characteristic	The isoelectric point is 5.5.
Applications	SDS-PAGE; WB; ELISA; IP.
Stability	The thermal stability is described by the loss rate of the target protein. The loss rate was determined by accelerated thermal degradation test, that is, incubate the protein

 Tel: 1-631-559-9269 1-516-512-3133

 Email: info@creative-biomart.com  Fax: 1-631-938-8127

 45-1 Ramsey Road, Shirley, NY 11967, USA

at 37°C for 48h, and no obvious degradation and precipitation were observed. (Referring from China Biological Products Standard, which was calculated by the Arrhenius equation.) The loss of this protein is less than 5% within the expiration date under appropriate storage condition.

Storage	Avoid repeated freeze/thaw cycles. Store at 2-8°C for one month. Aliquot and store at -80°C for 12 months.
Storage Buffer	Supplied as lyophilized form in PBS, pH7.4, containing 5% trehalose, 0.01% sarcosyl.
Reconstitution	Reconstitute in sterile PBS, pH7.2-pH7.4.

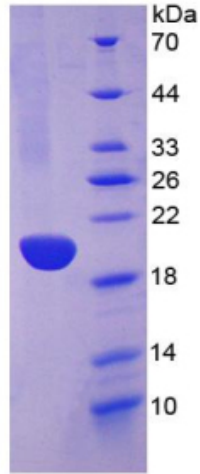
GENE INFORMATION

Gene Name	Krt13 keratin 13 [<i>Rattus norvegicus</i> (Norway rat)]
Official Symbol	Krt13
Synonyms	Myh3; myosin heavy chain 3; Myhse; RNMHCG; myosin-3; myosin heavy chain, fast skeletal muscle, embryonic; myosin heavy polypeptide 3; myosin, heavy chain 3, skeletal muscle, embryonic; myosin, heavy polypeptide 3, skeletal muscle, embryonic
Gene ID	287699
mRNA Refseq	NM_001004021.1
Protein Refseq	NP_001004021.1
UniProt ID	Q6IFV4

 Tel: 1-631-559-9269 1-516-512-3133

 Email: info@creative-biomart.com  Fax: 1-631-938-8127

 45-1 Ramsey Road, Shirley, NY 11967, USA



15% SDS-PAGE

SDS-PAGE

Tel: 1-631-559-9269 1-516-512-3133

Email: info@creative-biomart.com Fax: 1-631-938-8127

45-1 Ramsey Road, Shirley, NY 11967, USA