

## Recombinant Rat Krt14 protein, His & T7-tagged

**Cat. No.** Krt14-2731R    **Lot. No.** (See product label)

### SPECIFICATION

|                         |   |
|-------------------------|---|
| <b>Product Overview</b> | Recombinant Rat Krt14 aa. (Glu122~Glu429 (Accession # Q6IFV1)) fused with N-terminal His & T7 tag was produced in E. coli cells.  |
| <b>Species</b>          | Rat   |
| <b>Source</b>           | E.coli  |
| <b>ProteinLength</b>    | Glu122~Glu429   |
| <b>Form</b>             | Freeze-dried powder   |
| <b>Molecular Mass</b>   | Predicted Molecular Mass: 39.7kDa   |
| <b>Endotoxin</b>        | <1.0EU per 1g (determined by the LAL method)  |
| <b>Purity</b>           | >95%  |
| <b>Characteristic</b>   | The isoelectric point is 5.   |
| <b>Applications</b>     | SDS-PAGE; WB; ELISA; IP.  |
| <b>Stability</b>        | The thermal stability is described by the loss rate. The loss rate was determined by accelerated thermal degradation test, that is, incubate the protein at 37°C for 48h, and no obvious degradation and precipitation were observed. The loss rate is less than 5% within the expiration date under appropriate storage condition. |

 Tel: 1-631-559-9269    1-516-512-3133

 Email: [info@creative-biomart.com](mailto:info@creative-biomart.com)     Fax: 1-631-938-8127

 45-1 Ramsey Road, Shirley, NY 11967, USA

|                       |  |
|-----------------------|--|
| <b>Storage</b>        | Avoid repeated freeze/thaw cycles. Store at 2-8°C for one month. Aliquot and store at -80°C for 12 months. |
| <b>Storage buffer</b> | Supplied as lyophilized form in PBS, pH7.4, containing 5% trehalose, 0.01% sarcosyl.                       |
| <b>Reconstitution</b> | Reconstitute in sterile PBS, pH7.2-pH7.4.  |

## GENE INFORMATION

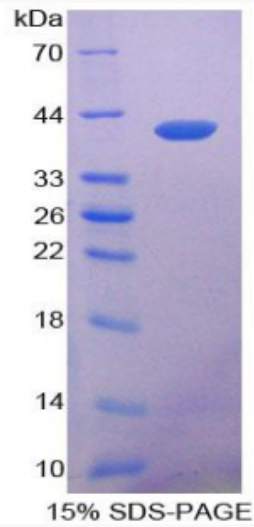
|                        |   |
|------------------------|---|
| <b>Gene Name</b>       | Krt14 keratin 14 [ <i>Rattus norvegicus</i> (Norway rat) ]  |
| <b>Official Symbol</b> | Krt14   |
| <b>Synonyms</b>        | Ka14; Krt1-14; CK-14; K14; cytokeratin-14; keratin 14 (epidermolysis bullosa simplex, Dowling-Meara, Koebner); keratin 14, type I; keratin complex 1, acidic, gene 14; type I keratin Ka14; keratin, type I cytoskeletal 14 |
| <b>Gene ID</b>         | 287701  |
| <b>mRNA Refseq</b>     | NM_001008751.1  |
| <b>Protein Refseq</b>  | NP_001008751.1  |
| <b>UniProt ID</b>      | Q6IFV1  |

 Tel: 1-631-559-9269 1-516-512-3133

 Email: [info@creative-biomart.com](mailto:info@creative-biomart.com)  Fax: 1-631-938-8127

 45-1 Ramsey Road, Shirley, NY 11967, USA

**SDS-PAGE**



 Tel: 1-631-559-9269 1-516-512-3133

 Email: [info@creative-biomart.com](mailto:info@creative-biomart.com)  Fax: 1-631-938-8127

 45-1 Ramsey Road, Shirley, NY 11967, USA