

Recombinant Rat Krt18 protein, His-tagged

Cat. No. Krt18-5843R **Lot. No.** (See product label)

SPECIFICATION

Product Overview	Recombinant Rat Krt18 aa. (Glu72~Gly380) fused with N-terminal His tag was produced in E. coli cells.
Species	Rat
Source	E.coli
ProteinLength	Glu72~Gly380
Form	Freeze-dried powder
Molecular Mass	40kDa as determined by SDS-PAGE reducing conditions
Endotoxin	<1.0EU per 1g (determined by the LAL method)
Purity	>98%
Characteristic	The isoelectric point is 5.2.
Applications	SDS-PAGE; WB; ELISA; IP; CoIP; Purification; Amine Reactive Labeling.
Stability	The thermal stability is described by the loss rate. The loss rate was determined by accelerated thermal degradation test, that is, incubate the protein at 37°C for 48h, and no obvious degradation and precipitation were observed. The loss rate is less than 5% within the expiration date under appropriate storage condition.

 Tel: 1-631-559-9269 1-516-512-3133

 Email: info@creative-biomart.com  Fax: 1-631-938-8127

 45-1 Ramsey Road, Shirley, NY 11967, USA

Storage	Avoid repeated freeze/thaw cycles. Store at 2-8°C for one month. Aliquot and store at -80°C for 12 months.
Concentration	200µg/mL
Storage buffer	20mM Tris, 150mM NaCl, pH8.0, containing 1mM EDTA, 1mM DTT, 0.01% sarcosyl, 5%Trehalose and Proclin300.
Reconstitution	Reconstitute in 20mM Tris, 150mM NaCl (pH8.0) to a concentration of 0.1-1.0 mg/mL. Do not vortex.

GENE INFORMATION

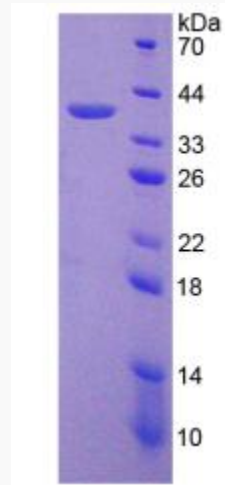
Gene Name	Krt18 keratin 18 [<i>Rattus norvegicus</i> (Norway rat)]
Official Symbol	Krt18
Synonyms	Krt1-18; CK-18; K18; cytokeratin-18; keratin 18, type I; keratin complex 1, acidic, gene 18; keratin, type I cytoskeletal 18
Gene ID	294853
mRNA Refseq	NM_053976.1
Protein Refseq	NP_446428.1
UniProt ID	Q5BJY9

 Tel: 1-631-559-9269 1-516-512-3133

 Email: info@creative-biomart.com  Fax: 1-631-938-8127

 45-1 Ramsey Road, Shirley, NY 11967, USA

SDS-PAGE



 Tel: 1-631-559-9269 1-516-512-3133

 Email: info@creative-biomart.com  Fax: 1-631-938-8127

 45-1 Ramsey Road, Shirley, NY 11967, USA